

## AMB-KO

- Metalne mlaznice sa pokretnom glavom i kružnim priključkom za montažu na ravne površine.
- Metal jet nozzle wall mounted for connection to flexible duct with adjustable head.

## AMB-KL

- Metalne mlaznice sa pokretnom glavom za montažu na kružne kanale.
- Metal jet nozzle for connection to round sleeve with adjustable head.

## AMB-KA

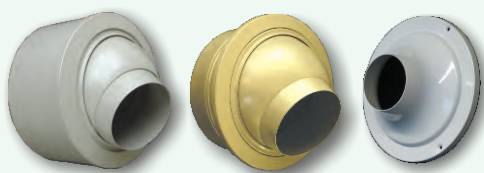
- Metalne mlaznice sa pokretnom glavom za montažu na pravougaone kanale.
- Metal jet nozzle for direct connection in the side of rectangular air duct with adjustable head.

## AMB-KSR

- Metalne mlaznice sa pokretnom glavom za bočnu montažu na kružne kanale.
- Metal jet nozzle for direct connection in the side of round air duct with adjustable head.

## AMB-O

- Metalne mlaznice sa nepogretnom glavom i kružnim priključkom.
- Metal jet nozzle wall mount with fixed head.



A,B: Pogledati crtež na strani 50  
A,B: See drawing page 50

DIMENZIJE PREČNIKA /  
NOMINAL DIMENSION

A	B	AMB+KO	AMB+KL	AMB+KA	AMB+KSR	AMB+O
Ø80	Ø251	70,47	78,52	88,59	114,76	12,30
Ø90	Ø251	73,49	81,54	91,61	117,78	13,25
Ø110	Ø251	76,51	86,57	94,63	122,81	14,19
Ø125	Ø251	79,52	89,59	97,65	125,83	15,14
Ø120	Ø443	130,87	181,20	191,27	229,52	29,49
Ø160	Ø443	134,89	185,22	195,29	233,54	31,13
Ø180	Ø443	138,92	189,25	199,32	237,57	32,77
Ø195	Ø443	142,94	193,28	203,34	241,60	34,41

## AMB-KO/KL/KA/KSR/AUTH

- Metalne mlaznice za montažu na ravne površine/kružne kanale/ Pravougaone kanale/ bočnu montažu, sa pokretnom glavom za regulisanje protoka vazduha. Glava mlaznice se pomera ka gora (hlađenje) ili ka dole (grejanje) automatski, zahvaljujući mehaničkom sistemu, bez električnog napajanja.
- Metal jet nozzle for connection to flexible duct/ round sleeve/ the side of rectangular air duct/ the side of round air duct, with adjustable head to regulate the air stream direction. The head is moved upwards (cooling) or downwards (heating) automatically by a mechanical system without need of electric power.



A,B: Pogledati crtež na strani 50.  
A,B: See drawing page 50.

DIMENZIJE PREČNIKA /  
NOMINAL DIMENSION

A	B	AMB+KO	AMB+KL	AMB+KA	AMB+KSR
Ø80	Ø251	127,82	135,87	145,94	172,11
Ø90	Ø251	130,84	138,89	148,96	175,13
Ø110	Ø251	133,86	143,92	151,98	180,16
Ø125	Ø251	136,87	146,94	155,00	183,18
Ø120	Ø443	229,65	279,98	290,05	328,30
Ø160	Ø443	233,67	284,00	294,07	332,32
Ø180	Ø443	237,70	288,03	298,10	336,35
Ø195	Ø443	241,73	292,07	302,12	340,39

## AMB-KO/KL/KA/KSR/ON OFF 220V-I/E

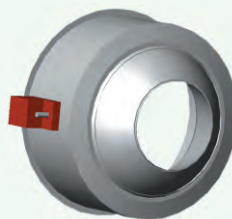
- Metalne mlaznice za montažu na ravne površine/kružne kanale/ Pravougaone kanale/ bočnu montažu, sa pokretnom glavom za regulisanje protoka vazduha. Glavu mlaznice pomera ON-OFF 220V regulator instaliran unutra (-I) ili spolja (-E). Kod difuzora AMB-KO-80/90/110/125, instalacija je moguća samo (-I).
- Metal jet nozzle for connection to flexible duct/ round sleeve/ the side of rectangular air duct/ the side of round air duct, with adjustable head to regulate the air stream direction. The head is moved by an ON-OFF 220V actuator installed internal (-I) or outside (-E). In the diffusers AMB-KO-80/90/110/125 the installation is possible only internal.

DIMENZIJE PREČNIKA /  
NOMINAL DIMENSION

A	B	AMB-KO ON/OFF- 220V	AMB-KL ON/OFF- 220V	AMB-KA ON/OFF- 220V	AMB-KSR ON/OFF- 220V
Ø80	Ø251	194,32	202,38	212,44	238,62
Ø90	Ø251	197,34	205,39	215,46	241,63
Ø110	Ø251	200,35	210,42	218,48	246,67
Ø125	Ø251	203,38	213,45	221,50	249,68
Ø120	Ø443	254,72	305,05	315,12	353,37
Ø160	Ø443	258,75	309,07	319,14	357,39
Ø180	Ø443	262,78	313,10	323,17	361,43
Ø195	Ø443	266,80	317,14	327,20	365,46



A,B: Pogledati crtež na strani 50.  
A,B: See drawing page 50.



### AMB-KO-AN-24V

- Metalne mlaznice sa pokretnom glavom i kružnim priključkom, za montažu na ravnepovršine, sa analognim elektroregulatorom 24V (0-10V).
- Metal jet nozzle wall mounted for connection to flexible duct with adjustable head and analogue 24V (0-10V) electrical actuator.

### AMB-KL-AN-24V

- Metalne mlaznice sa pokretnom glavom, za montažu na kružne kanale, sa analognim elektroregulatorom 24V (0-10V).
- Metal jet nozzle for connection to round sleeve with adjustable head and analogue 24V (0-10V) electric actuator.

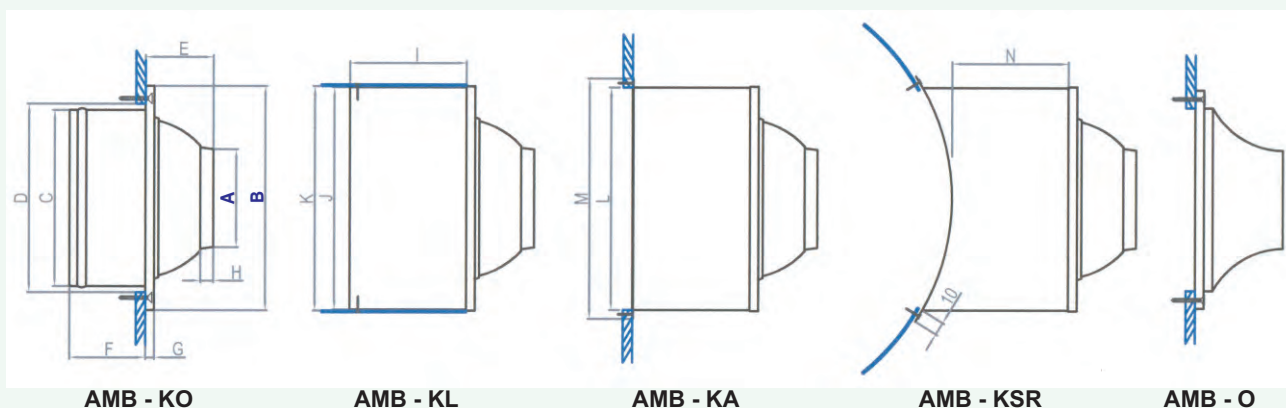
### AMB-KA-AN-24V

- Metalne mlaznice sa pokretnom glavom, za montažu na pravougaone kanale, sa analognim elektroregulatorom 24V (0-10V).
- Metal jet nozzle for direct connection in the side of rectangular air duct with adjustable head and analogue 24V (0-10V) electric actuator.

### AMB-KSR-AN-24V

- Metalne mlaznice sa pokretnom glavom, za bočnu montažu nakružne kanale, sa analognim elektroregulatorom 24V (0-10V).
- Metal jet nozzle for direct connection in the side of round air duct with adjustable head and analogue 24V (0-10V) electric actuator.

NOMINALNI PREČIK/ NOMINAL DIMENSION	A	B	AMB-KO- AN-24V	AMB-KL- AN-24V	AMB-KA- AN-24V	AMB-KSR- AN-24V
	Ø80	Ø251	239,25	247,31	257,38	283,55
Ø90	Ø251	242,28	250,33	260,40	286,57	
Ø110	Ø251	245,29	255,36	263,41	291,61	
Ø125	Ø251	248,32	258,38	266,43	294,62	
Ø120	Ø443	299,66	349,99	360,06	398,31	
Ø160	Ø443	303,68	354,01	364,08	402,33	
Ø180	Ø443	307,71	358,04	368,11	406,36	
Ø195	Ø443	311,73	362,07	372,13	410,39	



**NAPOMENE:**

\*Crtež anemostata sa dimenzijama na strani P3.

\* Za neke specijalne RAL boje postoji dodatak u ceni. Kontaktirajte nas za detaljnije informacije.

**NOTES:**

\*Drawings of the jet diffusers with dimension table is in the page P3.

\* For some special RAL colours there is extra charge. Come in touch with us for more information.

### **AMB-RP-Ø22**

- *Kružna mlaznica sa pokretnom glavom za montažu na otvor. Izrađena od plastike. Izlazni prečnik je 22mm.*
- *Round jet diffuser with adjustable head for installation in hole. Made from plastic. Active diameter 22mm.*

### **AMB-AP-Ø22**

- *Četvrtasti set mlaznica sa pokretnom glavom izrađen od plastike. Pravougaoni okvir od eloksiranog aluminijuma ili obojen RAL bojom. Za montažu na otvor ili na pravougaoni kanal. Izlazni prečnik svake mlaznice je 22mm.*
- *Set of square jet diffusers with adjustable head, made from plastic. In rectangular frame made from aluminium anodized or painted electrostatically in RAL colour. For installation in hole or in the side of rectangular air duct. The active diameter of each jet diffuser is 22mm.*

### **AMB-AP-Ø22-D/DK**

- *Četvrtasti komplet mlaznica sa pokretnom glavom izrađen od plastike. Pravougaoni okvir od eloksiranog aluminijuma ili obojen RAL bojom. Za montažu na otvor ili na pravougaoni kanal. Ima damper za regulaciju protoka vazduha, sa suprotnosmernim lamelama tip (D) ili klapnom tip (DK). Izlazni prečnik svake mlaznice je 22mm.*
- *Set of square jet diffusers with adjustable head, made from plastic. In rectangular frame made from aluminium anodized or painted electrostatically in RAL colour. For installation in hole or in the side of rectangular air duct. With damper for regulation of the air flow, opposed blade type (D) or flap type (DK). The active diameter of each jet diffuser is 22mm.*

### **AMB-AP-SR-Ø22**

- *Četvrtasti set mlaznica sa pokretnom glavom izrađen od plastike. Pravougaoni okvir od pocinkovanog čelika ili obojen RAL bojom. Za montažu na kružni kanal. Izlazni prečnik svake mlaznice je 22mm.*
- *Set of square jet diffusers with adjustable head, made from plastic. In rectangular frame made from sheet steel galvanized or painted electrostatically in RAL colour. For installation in the side of round air duct. The active diameter of each jet diffuser is 22mm.*

### **AMB-AP-SR-Ø22-D/DK**

- *Četvrtasti set mlaznica sa pokretnom glavom izrađen od plastike. Pravougaoni okvir od pocinkovanog čelika ili obojen RAL bojom. Za montažu na kružni kanal. Sa damperom za regulaciju protoka vazduha, sa suprotnosmernim lamelama tip (D) ili klapnom tip (DK). Izlazni prečnik svake mlaznice je 22mm.*
- *Set of square jet diffusers with adjustable head, made from plastic. In rectangular frame made from sheet steel galvanized or painted electrostatically in RAL colour. For installation in in the side of round air duct. With damper for regulation of the air flow, opposed blade type (D) or flap type (DK). The active diameter of each jet diffuser is 22mm.*



**AMB-RP-Ø22**



**AMB-AP-Ø22-7x2**



**AMB-AP-SR-Ø22-7x2**

**CENOVNIK / PRICELIST**

**AMB-RP-Ø22:** 8,03 €/kom  
8,03 €/pcs

**AMB-AP-Ø22:** 8,03 €/komad u kompletu  
8,03 €/jet in the set  
(npr: za 10x2 mlaznica 160,58 €) / (i.e. for 10x2 jets 160,58 €)

**AMB-Ø22-D/DK:**

Cenu za mlaznice računamo kao kod AMB-AP-Ø22 uz dodatak cene za damper. Dimenzije dampera su (A\*70)X(B\*70) mm. Cenu za damper možete videti u tabeli za D na strani 94.

We calculate the price of the diffuser as we see in the AMB-AP-Ø22. Then we add the price of the damper. The dimensions of the damper are: (A\*70)X(B\*70) mm. We can see the price of the damper from the table D in page 94.

**AMB-AP-SR-22 & AMB-AP-SR-Ø22-D/DK**

Ove mlaznice su napravljene samo u nekim dimenzijama: A, B. Broj mlaznica po širini/ visini.  
These diffusers are manufactured only in some dimensions. A,B: No of jets in width/height.

**AMB-AP-SR-Ø22**

MLAZNICA PO DUŽINI /  
JETS PER WIDTH

MLAZNICA PO VISINI /  
JETS PER HEIGHT

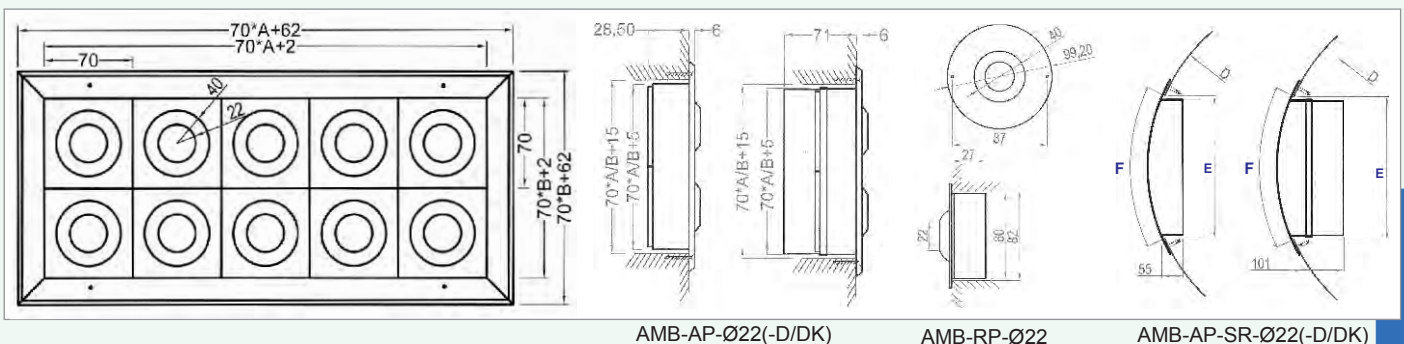
B \ A	5	7	10	13	NAJMANJI PREČNIK/ MINIMUM DIAMETER
1	52,19	73,06	104,38	135,69	Ø200
2	104,38	146,13	208,75	271,38	Ø350
3	156,56	219,19	313,13	407,07	Ø450

**AMB-AP-SR-Ø22-D/DK**

MLAZNICA PO DUŽINI /  
JETS PER WIDTH

MLAZNICA PO VISINI /  
JETS PER HEIGHT

B \ A	5	7	10	13	NAJMANJI PREČNIK/ MINIMUM DIAMETER
1	60,31	83,57	117,40	150,57	Ø200
2	114,15	158,51	223,11	288,70	Ø350
3	167,25	232,36	329,12	427,46	Ø450



AMB-AP-Ø22(-D/DK)

AMB-RP-Ø22

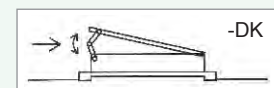
AMB-AP-SR-Ø22(-D/DK)

**NAPOMENE:**

\*Tabela sa dimenzijama otvora za difuzor AMB-APSR-022 (-D/DK) na strani P5.

**NOTES:**

\*Dimension table for the hole of the diffusers AMB-APSR-022 (-D/DK) in page P5.



### AMB-RP-Ø42

- Kružna mlaznica sa pokretnom glavom za montažu na otvor. Izrađena od plastike. Izlazni prečnik je 42mm.
- Round jet diffuser with adjustable head for installation in hole. Made from plastic. Active diameter 42 mm.

### AMB-AP-Ø42

- Četvrtasti set mlaznica sa pokretnom glavom izrađen od plastike. Pravougaoni okvir od eloksiranog aluminijuma ili obojen RAL bojom. Za montažu na otvor ili na pravougaoni kanal. Izlazni prečnik svake mlaznice je 42mm.
- Set of square jet diffusers with adjustable head, made from plastic. In rectangular frame made from aluminium anodized or painted electrostatically in RAL colour. For installation in hole or in the side of rectangular air duct. The active diameter of each jet diffuser is 42mm.

### AMB-AP-Ø42-D/DK

- Četvrtasti set mlaznica sa pokretnom glavom izrađen od plastike. Pravougaoni okvir od eloksiranog aluminijuma ili obojen RAL bojom. Za montažu na otvor ili na pravougaoni kanal. Sa demperom za regulaciju protoka vazduha, sa suprotnosmernim lamelama tip (D) ili klapnom tip (DK) Izlazni prečnik svake mlaznice je 42mm.
- Set of square jet diffusers with adjustable head, made from plastic. In rectangular frame made from aluminium anodized or painted electrostatically in RAL colour. For installation in hole or in the side of rectangular air duct. With damper for regulation of the air flow, opposed blade type (D) or flap type (DK). The active diameter of each jet diffuser is 42mm.

### AMB-AP-SR-Ø42

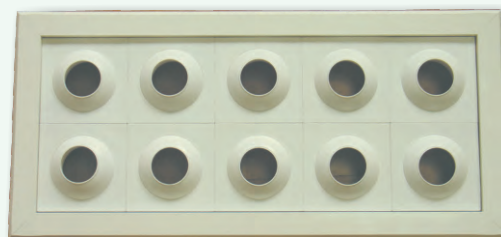
- Četvrtasti set mlaznica sa pokretnom glavom izrađen od plastike. Pravougaoni okvir od pocinkovanog čelika ili obojen RAL bojom. Za montažu na kružni kanal. Izlazni prečnik svake mlaznice je 42mm.
- Set of square jet diffusers with adjustable head, made from plastic. In rectangular frame made from sheet steel galvanized or painted electrostatically in RAL colour. For installation in the side of round air duct. The active diameter of each jet diffuser is 42mm.

### AMB-AP-SR-Ø42-D/DK

- Četvrtasti set mlaznica sa pokretnom glavom izrađen od plastike. Pravougaoni okvir od pocinkovanog čelika ili obojen RAL bojom. Za montažu na kružni kanal. Sa demperom za regulaciju protoka vazduha, sa suprotnosmernim lamelama tip (D) ili klapnom tip (DK). Izlazni prečnik svake mlaznice je 42mm.
- Set of square jet diffusers with adjustable head, made from plastic. In rectangular frame made from sheet steel galvanized or painted electrostatically in RAL colour. For installation in the side of round air duct. With damper for regulation of the air flow, opposed blade type (D) or flap type (DK). The active diameter of each jet diffuser is 42mm.



AMB-RP-Ø42



AMB-AP-Ø42-5X2