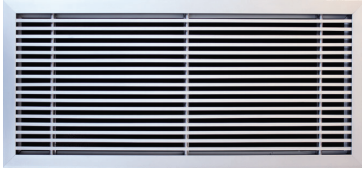
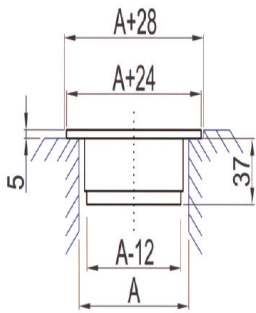


BT



Podna, teški tip, rešetka sa jednim redom nepokretnih lamela za izbacivanje pravo. Lamelle su paralelne prvoj navedenoj dimenziji. Usisna ili odsisna rešetka koja se postavlja na pod.

Linear, heavy type, grille with one row of fixed blades for straight throw. The blades are parallel to the first mentioned dimension. Is used for supply or return air and is installed in floors.



CENOVNIK ZA REŠETKE OD ELOKSIRANOG ALUMINIJUMA U PRIRODNOJ BOJI

PRICELIST FOR GRILLES MADE OF ANODIZED ALUMINIUM IN NATURAL COLOUR

Visina / Height (mm)

	50	75	100	125	150	200	250	300	350	400
100	23,66	23,66	23,66							
125	23,66	23,66	23,66	23,66						
150	23,66	23,66	23,66	23,66	23,66					
200	23,66	23,66	23,66	23,66	23,66	23,66				
250	23,66	23,66	23,66	23,66	23,66	24,72	30,59			
300	23,66	23,66	23,66	25,63	28,39	29,67	36,71	42,25		
350	23,66	23,66	26,87	29,90	33,13	34,61	42,82	49,29	55,82	
400	23,66	27,01	30,71	34,17	37,86	39,55	48,94	56,33	63,79	71,03
450	26,23	30,39	34,54	38,44	42,59	44,50	55,06	63,37	71,76	79,90
500	29,15	33,76	38,38	42,71	47,32	49,44	61,18	70,41	79,73	88,78
550	32,06	37,14	42,22	46,98	52,05	54,39	67,29	77,45	87,71	97,66
600	34,98	40,51	46,06	51,25	56,78	59,33	73,41	84,49	95,68	106,54
650	37,89	43,89	49,90	55,52	61,52	64,27	79,53	91,53	103,65	115,42
700	40,80	47,26	53,73	59,79	66,25	69,22	85,64	98,57	111,63	124,29
750	43,72	50,64	57,57	64,06	70,98	74,16	91,76	105,61	119,60	133,17
800	46,63	54,02	61,41	68,33	75,71	79,10	97,88	112,65	127,57	142,05
850	49,55	57,39	65,25	72,60	80,44	84,05	104,00	119,69	135,54	150,93
900	52,46	60,77	69,08	76,87	85,17	88,99	110,11	126,73	143,52	159,80
950	55,38	64,14	72,92	81,14	89,91	93,93	116,23	133,77	151,49	168,68
1000	58,29	67,52	76,76	85,41	94,64	98,88	122,35	140,81	159,46	177,56

Širina / Width (mm)

NAPOMENA:
* Za neke specijalne RAL boje postoji dodatak u ceni. Pozovite nas za detaljnije.

NOTES:
* For some special RAL colours there is extra charge. Call us for more information.

Visina / Height (mm)

	50	75	100	125	150	200	250	300	350	400
100	34,57	34,57	34,57							
125	34,57	34,57	34,57	34,57						
150	34,57	34,57	34,57	34,57	34,57					
200	34,57	34,57	34,57	34,57	34,57	34,57				
250	34,57	34,57	34,57	34,57	34,57	35,63	41,50			
300	34,57	34,57	34,57	36,54	39,30	40,58	47,62	53,16		
350	34,57	34,57	37,78	40,81	44,04	45,52	53,73	60,20	66,72	
400	34,57	37,92	41,62	45,08	48,77	50,46	59,85	67,24	74,70	81,94
450	37,14	41,30	45,45	49,35	53,50	55,41	65,97	74,28	82,67	90,81
500	40,06	44,67	49,29	53,62	58,23	60,35	72,08	81,32	90,64	99,69
550	42,97	48,05	53,13	57,89	62,96	65,29	78,20	88,36	98,62	108,57
600	45,89	51,42	56,97	62,16	67,69	70,24	84,32	95,40	106,59	117,45
650	48,80	54,80	60,80	66,43	72,42	75,18	90,44	102,44	114,56	126,32
700	51,71	58,17	64,64	70,70	77,16	80,13	96,55	109,48	122,54	135,20
750	54,63	61,55	68,48	74,97	81,89	85,07	102,67	116,52	130,51	144,08
800	57,54	64,92	72,32	79,24	86,62	90,01	108,79	123,56	138,48	152,96
850	60,46	68,30	76,16	83,51	91,35	94,96	114,90	130,60	146,45	162,10
900	63,37	71,68	79,99	87,78	96,08	99,90	121,02	137,64	154,43	171,66
950	66,29	75,05	83,83	92,05	100,81	104,84	127,14	144,68	162,40	181,37
1000	69,20	78,43	87,67	96,32	105,55	109,79	133,26	151,72	170,41	191,13

CENOVNIK ZA REŠETKE OBOJENE RAL BOJOM PLASTIFICIRANE

PRICE LIST FOR GRILLES PAINTED IN RAL COLOUR ELECTROSTATICALLY

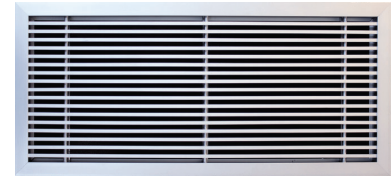




LINEARNE REŠETKE LINEAR GRILLES

BT-D

Podna, teški tip, rešetka sa jednim redom nepokretnih lamela za izbacivanje pravo. Lamele su paralelne sa prvo navedenoj dimenziji. Usisna i odsisna rešetka koja se može postaviti na pod. Posедуje regulator protoka sa suprotnosmernim lamelama.



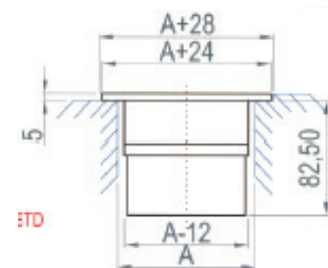
Linear, heavy type, grille with one row of fixed blades for straight throw. The blades are parallel to the first mentioned dimension. Is used for supply or return air and is installed in floors. With opposed blade damper for regulation of air flow.

Visina / Height (mm)

Širina / Width (mm)	100	125	150	200	250	300	350	400
100	34,69							
125	34,69	34,69						
150	34,69	34,69	34,69					
200	34,69	34,69	34,69	34,69				
250	34,69	34,69	34,69	36,84	43,67			
300	34,69	36,59	40,53	42,94	50,93	57,63		
350	37,66	42,02	46,40	49,11	58,21	66,60	74,86	
400	42,66	47,44	52,34	55,14	64,40	75,57	84,81	94,70
450	47,65	52,87	58,23	61,42	71,86	84,54	94,66	105,94
500	52,65	58,30	64,13	67,33	80,04	93,51	104,92	117,12
550	57,64	63,72	69,89	73,50	87,50	102,46	114,45	128,25
600	62,64	69,15	75,90	79,73	94,69	111,37	124,34	139,49
650	67,03	73,90	80,83	85,33	102,44	118,59	133,47	149,31
700	71,43	78,64	85,76	90,94	110,19	125,82	142,60	159,12
750	75,65	83,48	91,41	97,44	118,30	134,85	154,22	172,23
800	80,65	88,63	97,37	104,50	127,88	146,70	169,30	185,90
850	84,97	93,81	103,03	110,59	135,83	155,86	178,63	198,06
900	89,29	98,99	108,69	116,69	143,79	165,02	187,96	210,21
950	93,79	104,79	114,93	124,03	152,01	174,46	198,82	222,06
1000	98,30	110,60	121,18	131,38	160,23	183,91	209,68	233,92

CENOVNIK ZA REŠETKE OD
ELOKSIRANOG ALUMINIJUMA
U PRIRODNOJ BOJI

PRICE LIST FOR GRILLES MADE
OF ANODIZED ALUMINIUM
IN NATURAL COLOUR



NAPOMENA:
* Za neke specijalne RAL boje postoji dodatak u ceni. Pozovite nas za detaljnije informacije.

NOTES:
* For some special RAL colours there is extra charge. Call us for more information.

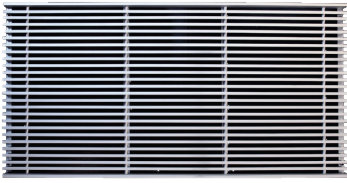
Visina / Height (mm)

Širina / Width (mm)	100	125	150	200	250	300	350	400
100	45,60							
125	45,60	45,60						
150	45,60	45,60	45,60					
200	45,60	45,60	45,60	45,60				
250	45,60	45,60	45,60	47,75	54,58			
300	45,60	47,50	51,44	53,85	61,84	68,54		
350	48,57	52,93	57,31	60,02	69,12	77,51	85,77	
400	53,57	58,35	63,25	66,05	75,31	86,48	95,72	105,61
450	58,56	63,78	69,14	72,33	82,77	95,45	105,57	116,85
500	63,56	69,21	75,04	78,24	90,95	104,41	115,83	128,03
550	68,55	74,63	80,80	84,41	98,41	113,37	125,36	139,16
600	73,55	80,06	86,80	90,63	105,60	122,27	135,25	150,40
650	77,94	84,81	91,74	96,24	113,35	129,50	144,38	160,22
700	82,34	89,55	96,67	101,85	121,10	136,73	153,51	170,03
750	86,56	94,39	102,32	108,34	129,21	145,76	165,13	183,14
800	91,56	99,54	108,28	115,41	138,78	157,61	180,21	196,81
850	95,88	104,72	113,94	121,50	146,74	166,77	189,54	209,23
900	100,20	109,90	119,60	127,60	154,69	175,93	198,87	222,07
950	104,70	115,70	125,84	134,94	162,92	185,37	209,73	234,75
1000	109,21	121,51	132,09	142,29	171,14	194,82	220,63	247,49

CENOVNIK ZA REŠETKE
OBOJENE RAL BOJOM
PLASTIFICIRANE

PRICE LIST FOR GRILLES
PAINTED IN RAL COLOUR
ELECTROSTATICALLY

BT-LS



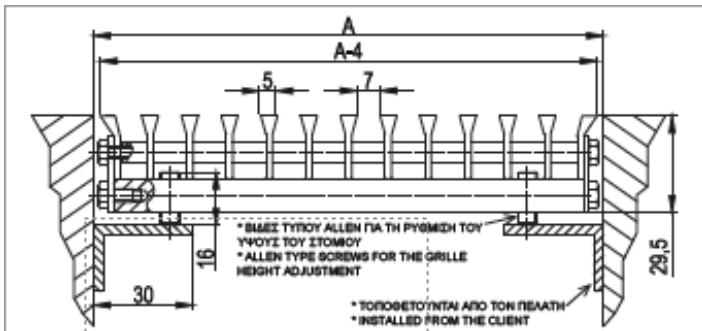
Podna rešetka, teški tip, bez okvira, sa jednim redom fiksnih lamela od anodiziranog aluminijuma. Lamele su paralelne sa prvom pomenutom dimenzijom. Za dovodni ili povratni vazduh. Visina se može podesiti pomoću šrafova na dnu rešetke.

Heavy type floor grille, without frame, with one row of fixed anodized aluminum blades. The blades are parallel to the first mentioned dimension. For supply or return air. The height can be adjusted with screws in the bottom of the grille.

CENOVNIK ZA REŠETKE OD ELOKSIRANOG ALUMINIJUMA U PRIRODNOJ BOJI

PRICELIST FOR GRILLES MADE OF ANODIZED ALUMINIUM IN NATURAL COLOUR

		Visina / Height (mm)									
		50	75	100	125	150	200	250	300	350	400
Širina / Width (mm)	100	23,66	23,66	23,66							
	125	23,66	23,66	23,66	23,66						
	150	23,66	23,66	23,66	23,66	23,66					
	200	23,66	23,66	23,66	23,66	23,66	23,66				
	250	23,66	23,66	23,66	23,66	23,66	24,72	30,59			
	300	23,66	23,66	23,66	25,63	28,39	29,67	36,71	42,25		
	350	23,66	23,66	26,87	29,90	33,13	34,61	42,82	49,29	55,82	
	400	23,66	27,01	30,71	34,17	37,86	39,55	48,94	56,33	63,79	71,03
	450	26,23	30,39	34,54	38,44	42,59	44,50	55,06	63,37	71,76	79,90
	500	29,15	33,76	38,38	42,71	47,32	49,44	61,18	70,41	79,73	88,78
	550	32,06	37,14	42,22	46,98	52,05	54,39	67,29	77,45	87,71	97,66
	600	34,98	40,51	46,06	51,25	56,78	59,33	73,41	84,49	95,68	106,54
	650	37,89	43,89	49,90	55,52	61,52	64,27	79,53	91,53	103,65	115,42
	700	40,80	47,26	53,73	59,79	66,25	69,22	85,64	98,57	111,63	124,29
	750	43,72	50,64	57,57	64,06	70,98	74,16	91,76	105,61	119,60	133,17
	800	46,63	54,02	61,41	68,33	75,71	79,10	97,88	112,65	127,57	142,05
850	49,55	57,39	65,25	72,60	80,44	84,05	104,00	119,69	135,54	150,93	
900	52,46	60,77	69,08	76,87	85,17	88,99	110,11	126,73	143,52	159,80	
950	55,38	64,14	72,92	81,14	89,91	93,93	116,23	133,77	151,49	168,68	
1000	58,29	67,52	76,76	85,41	94,64	98,88	122,35	140,81	159,46	177,56	



NAPOMENA:
* Za neke specijalne RAL boje postoji dodatak u ceni. Pozovite nas za detaljnije

NOTES:
* For some special RAL colours there is extra charge. Call us for more information.

		Visina / Height (mm)									
		50	75	100	125	150	200	250	300	350	400
Širina / Width (mm)	100	34,57	34,57	34,57							
	125	34,57	34,57	34,57	34,57						
	150	34,57	34,57	34,57	34,57	34,57					
	200	34,57	34,57	34,57	34,57	34,57	34,57				
	250	34,57	34,57	34,57	34,57	34,57	35,63	41,50			
	300	34,57	34,57	34,57	36,54	39,30	40,58	47,62	53,16		
	350	34,57	34,57	37,78	40,81	44,04	45,52	53,73	60,20	66,72	
	400	34,57	37,92	41,62	45,08	48,77	50,46	59,85	67,24	74,70	81,94
	450	37,14	41,30	45,45	49,35	53,50	55,41	65,97	74,28	82,67	90,81
	500	40,06	44,67	49,29	53,62	58,23	60,35	72,08	81,32	90,64	99,69
	550	42,97	48,05	53,13	57,89	62,96	65,29	78,20	88,36	98,62	108,57
	600	45,89	51,42	56,97	62,16	67,69	70,24	84,32	95,40	106,59	117,45
	650	48,80	54,80	60,80	66,43	72,42	75,18	90,44	102,44	114,56	126,32
	700	51,71	58,17	64,64	70,70	77,16	80,13	96,55	109,48	122,54	135,20
	750	54,63	61,55	68,48	74,97	81,89	85,07	102,67	116,52	130,51	144,08
	800	57,54	64,92	72,32	79,24	86,62	90,01	108,79	123,56	138,48	152,96
850	60,46	68,30	76,16	83,51	91,35	94,96	114,90	130,60	146,45	162,10	
900	63,37	71,68	79,99	87,78	96,08	99,90	121,02	137,64	154,43	171,66	
950	66,29	75,05	83,83	92,05	100,81	104,84	127,14	144,68	162,40	181,37	
1000	69,20	78,43	87,67	96,32	105,55	109,79	133,26	151,72	170,41	191,13	

CENOVNIK ZA REŠETKE OBOJENE RAL BOJOM PLASTIFICIRANE

PRICE LIST FOR GRILLES PAINTED IN RAL COLOUR ELECTROSTATICALLY

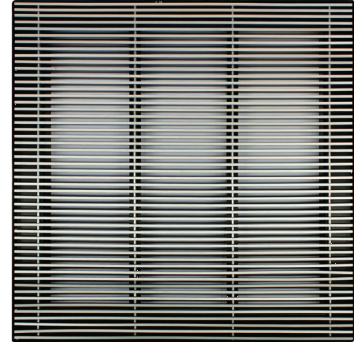




BTDC

Podna, linearna, teški tip, sa čeličnim ramom (debljine 3 mm) u crnoj boji i jednim redom nepokretnih lamela od eloksiranog aluminijuma. Usisna ili odsisna rešetka. Visina je podesiva pomoću šrafova u uglu.

Heavy type, linear, floor grille with steel frame (3mm thickness) in black color and one row of anodized aluminum fixed blades. For supply or extract air in data centers or other applications. The grille height is adjusted by screws in the corner.



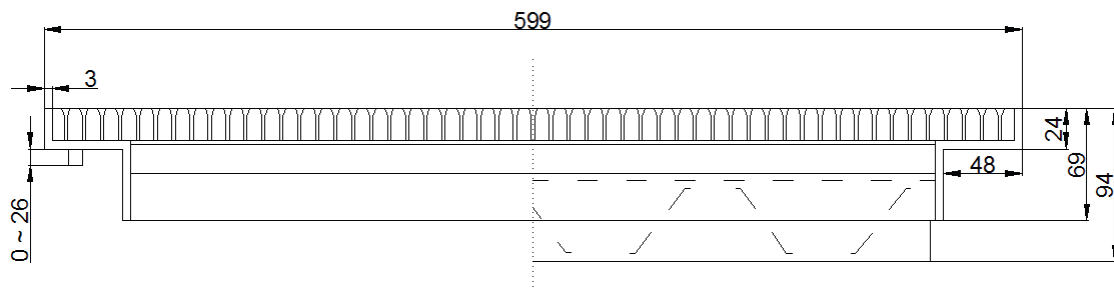
BTDC-D

Podna, linearna, teški tip, sa čeličnim ramom (debljine 3 mm) u crnoj boji i jednim redom nepokretnih lamela od eloksiranog aluminijuma. Usisna i odsisna rešetka.

Poseđuje regulator protoka sa suprotnosmernim lamelama. Visina je podesiva pomoću šrafova u uglu.

Heavy type, linear, floor grille with steel frame (3mm thickness) in black color and one row of anodized aluminum fixed blades. For supply or extract air in data centers or other applications. The grille height is adjusted by screws in the corner. With opposed blade damper made by aluminum.

TIP TYPE	SPOLJAŠNJA DIMENZIJA OUTSIDE DIMENSIONS (mm)	CENA PRICE
BTDC	599 X 599	260,63
BTDC-D	599 X 599	294,34



E12-S



Rešetka za ubacivanje ili izvlačenje vazduha sa regulatorom protoka sa suprotnosmernim lamelama i filterom koja može da se ugradi na zid ili plafon, sa jednim redom pokretnih lamela paralelnih sa prvom datom dimenzijom.

Supply or return air grille for installation in wall or ceiling with 1 row of adjustable blades parallel to the first mentioned dimension. With opposed blade damper for regulation of air flow and air filter.

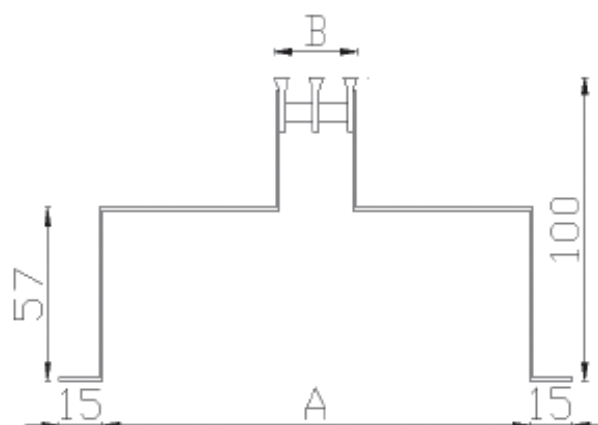
CENOVNIK ZA REŠETKE
OBOJENE

PRICE LIST FOR GRILLES

Broj proreza No of slots	€/m	
	E12-S	E12-S-RAL
E12-S-1	67,21	80,63
E12-S-2	69,62	83,04
E12-S-3	73,35	86,77
E12-S-4	79,16	93,66
E12-S-5	82,80	98,90
E12-S-6	88,05	104,15

TABELA DIMENZIJA
DIMENSIONS TABLE

	Broj proreza / No of slots	A	B
E12-S-1	1	130	18
E12-S-2	2	150	30
E12-S-3	3	180	42
E12-S-4	4	230	54
E12-S-5	5	280	66
E12-S-6	6	330	78



NAPOMENA:

*Za neke specijalne RAL boje postoji dodatak u ceni. Pozovite nas za detaljnije informacije.

NOTES:

* For some special RAL colours there is extra charge. Call us for more information.

"П" frame (page P2, drawing 1B) with extra charge.

