

Uputstvo za JAKKA CONTROL KIT 4 SMART



JAKKA®

www.jakkagroup.com

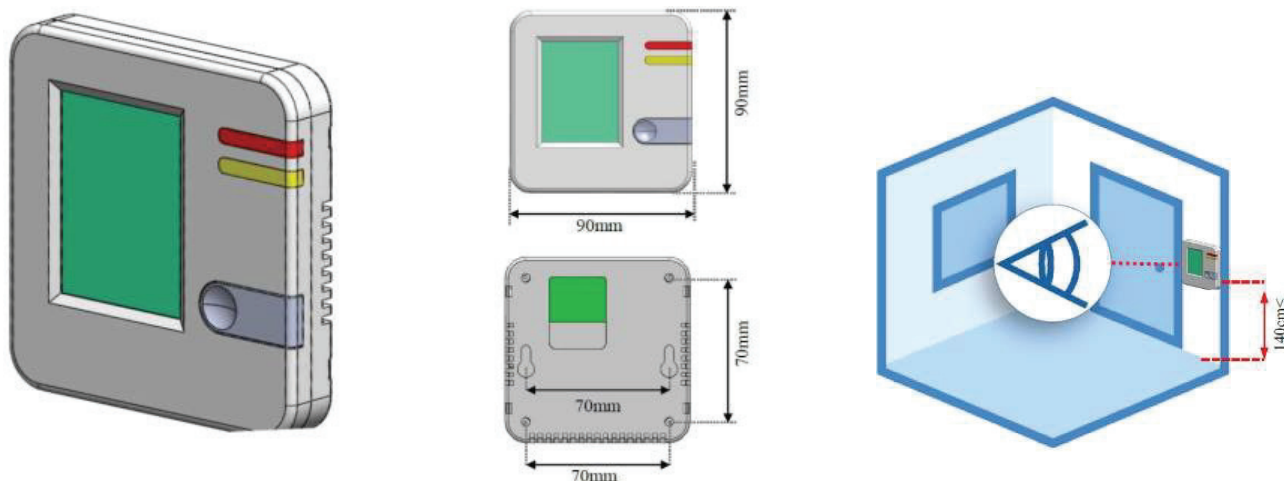
Podaci u katalogu su informativnog karaktera. Jakka Group zadržava pravo promene cena i podataka bez prethodne najave. Za više informacija, pre konačne kupovine, kontaktirajte našu prodajnu službu.



Sadržaj

DIMENZIJE I UGRADNJA	1
POVEZIVANJE	2
FUNKCIJE	3
PODEŠAVANJE TEMPERATURE	4
BRZINA RADA VENTILATORA	5
KLIMA	6
UPOZORENJE I INFO	7
TAJMER	8
VREME I DATUM	9
JEZIK	10
POJAČANJE SNAGE	11
INFORMACIJE	12
MODBUS	13 - 16
ŠEMA POVEZIVANJE JRHB73	17-23
PODEŠAVANJE - PARAMETRI	24

DIMENZIJE & UGRADNJA

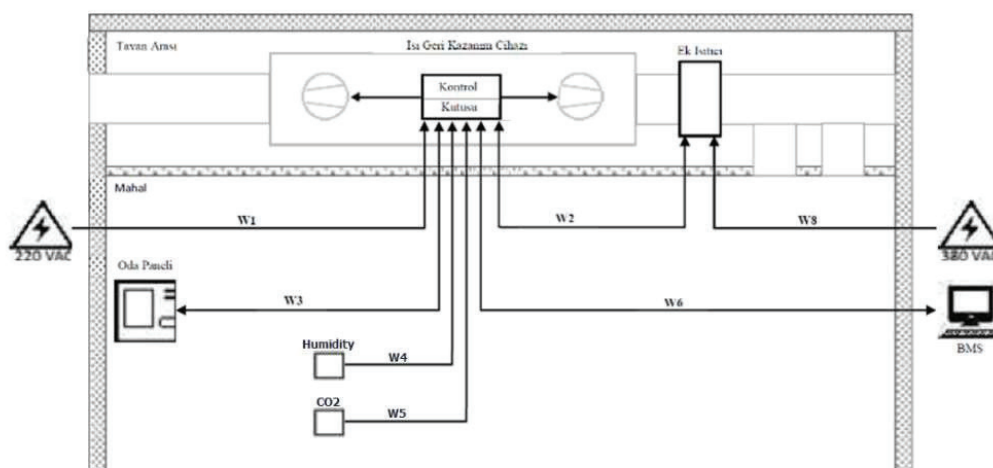


Za praktično i efikasno korišćenje preporučujemo da ugradnja kontrolera bude na visini ne manjoj od 140 cm.





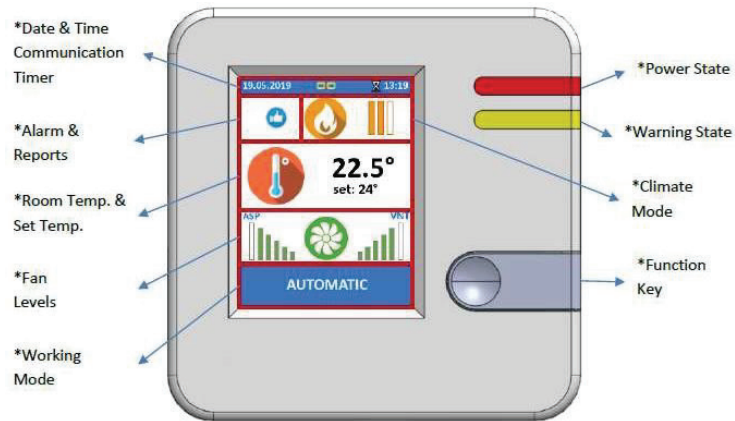
Kabl mora biti instaliran između displeja i kontrolne ploče za V-X-Y-Z terminale. Presek kabla mora biti izabran u skladu sa presekom priključka. Povezivanje displeja i kontrolna ploča mora biti izvedeno jedan prema jedan prema oznaci terminala.



POVEZIVANJE		
KABL	INFORMACIJE	
W1	Glavno snabdevanje	3x1.5 mm ²
W2	Kontrolni izlazi (opciono)	6x0.50 mm ²
W3	Korisnički interfejs	4x0.22 mm ²
W4	Vlažnost (opciono)	2x0.50 mm ²
W5	CO2 Senzor (opciono)	2x0.50 mm ²
W6	BMS	2x0.22 mm ²
W8	Spoljašnje snabdevanje za dodatke	5x2.50 mm ²

Napomena: Proverite snagu spoljašnjih dodataka pre povezivanja. Prečnik kabla se može menjati u zavisnosti od potrošnje energije.

FUNKCIJE



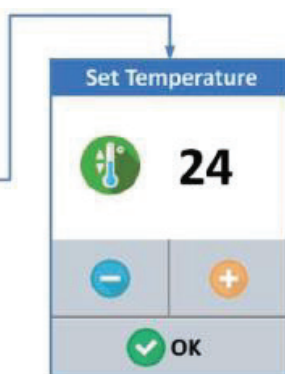
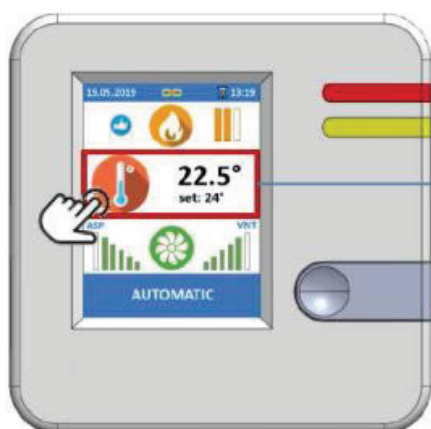
Working Mode	Climate Mode	Setups	Warning & Info
Off	Ventilation	Set Temperature	System is O.K.
Manual	Heating	Fan Levels	There is Alarm
Ventilation	Cooling		Filter Dirty
Heating	Free Cooling		Frosting
Cooling			Communication
Automatic			Timer State





PODEŠAVANJE TEMPERATURE

Podešavanje temperature se vrši tako što korisnik unosi željenu temperaturu, zatim uređaj obavlja operacije grejanja, hlađenja i ventilacije prema zadatoj temperaturi.



- 1- Press the Temperature Symbol on the Main Screen.
- 2- Press + or – buttons for temperature setting.
- 3- Press OK button for save or Press Function Button without save and return to Main Screen.

BRZINA RADA VENTILATORA

Brzina rada ventilatora se podešava prema željama korisnika. Svaki ventilator ima 6 nivoa brzine. Da bi ova radnja bila moguća uređaj mora biti u “manuel” režimu.

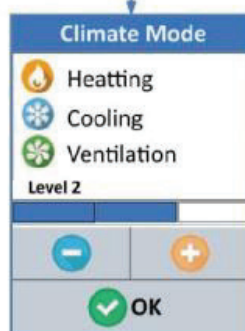


- 1- Press fan icon at the bottom side of Main Screen.
- 2- Press + or – buttons for each fan level setting.
- 3- Press OK button for save or Press Function Button without save and return to Main Screen.





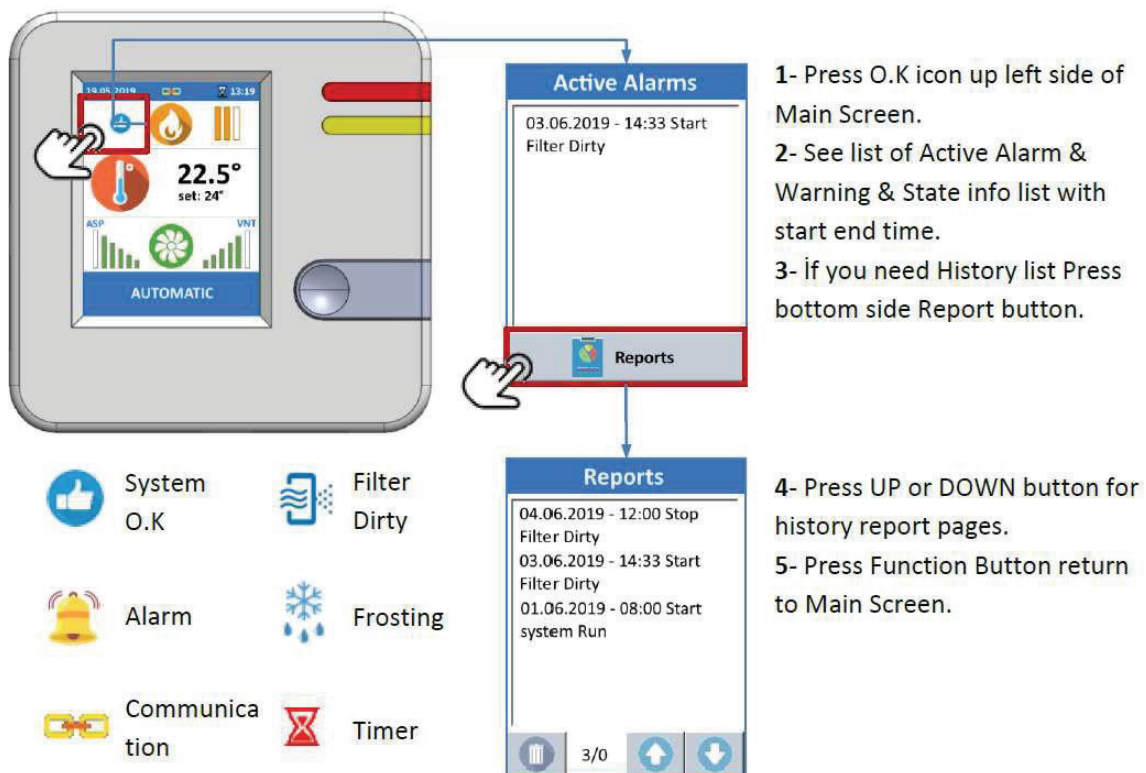
Opciju "klima" korisnik podešava prema svojim potrebama u skladu sa mogućnostima klima uređaja. Da bi ova radnja bila moguća, uređaj mora biti u "manuel" režimu.



- 1-** Press Climate Mode icon up side of Main Screen.
- 2-** Firstly select Climate Mode and Press icon than Press + or – button set climate level.
- 3-** Press OK button for save or Press Function Button without save and return to Main Screen.

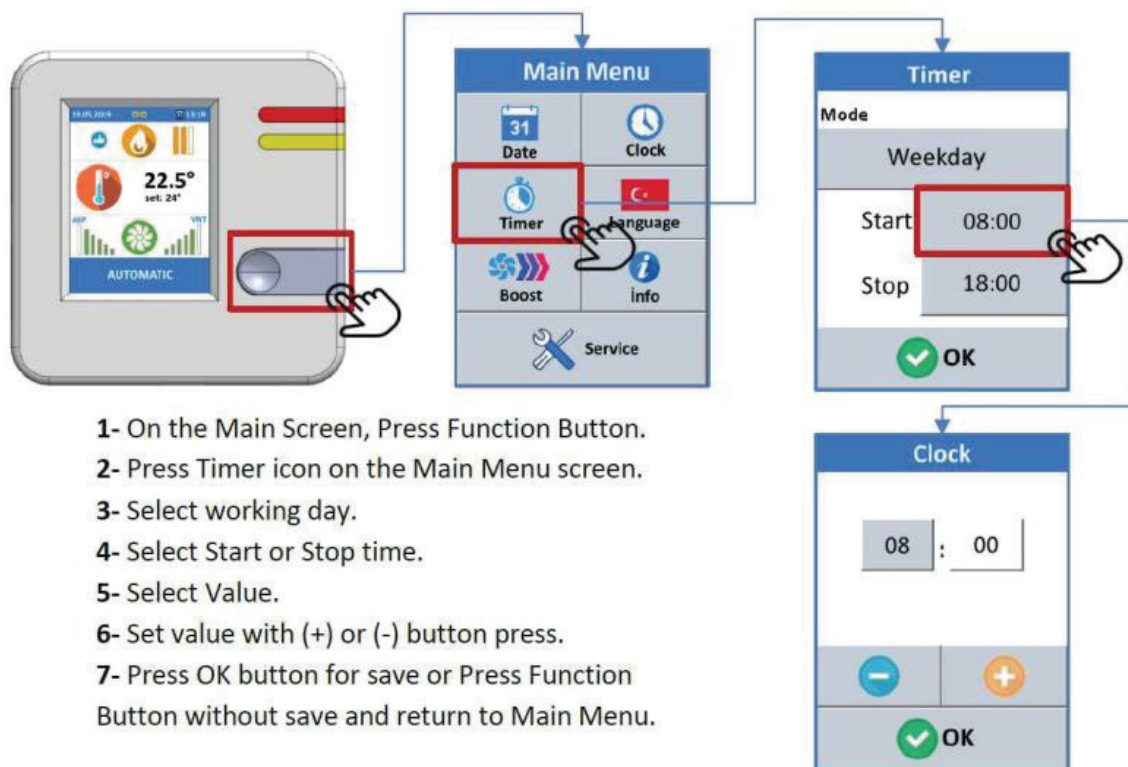
UPOZORENJE I INFO

Upozorenja, alarmi i stanje uređaja se prikazuju na ekranu. Servis i korisnik mogu imati uvid u stanje uređaja pomoću opcija prikazanih na slici ispod.



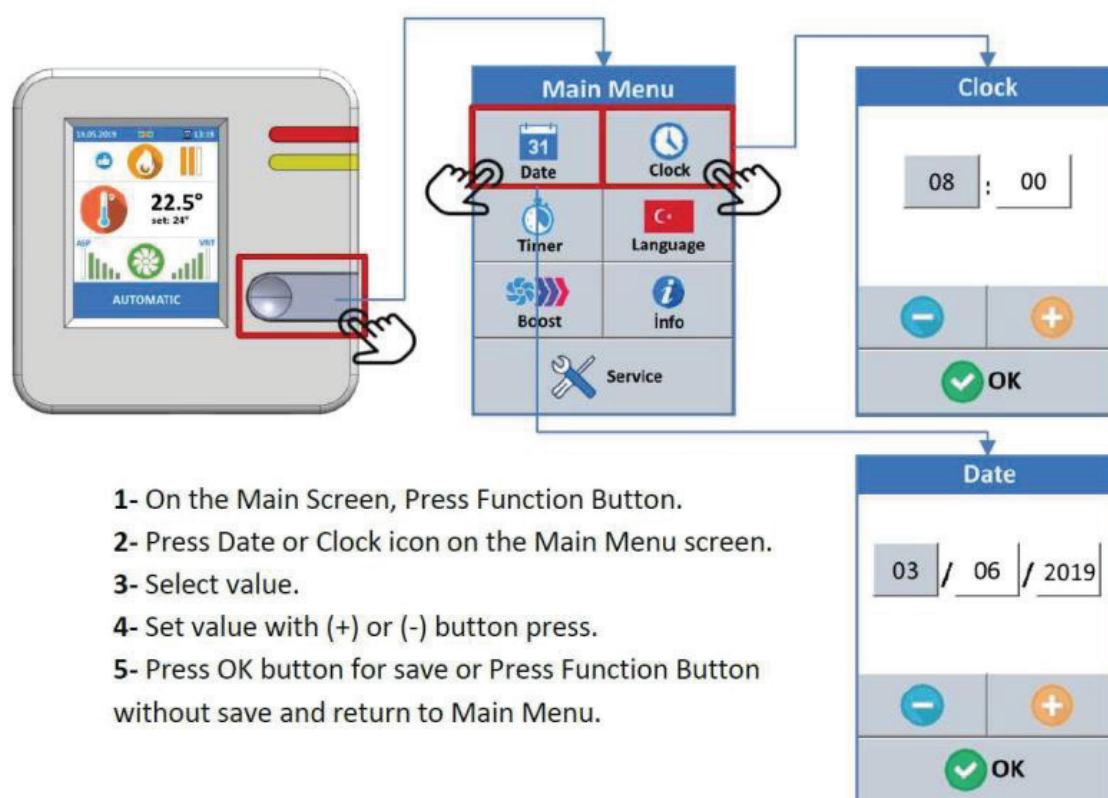


Dani rada mogu da se izaberu u formatu ponedeljak-petak (5 dana), ponedeljak-subota (6 dana) i ponedeljak-nedelja (7 dana). Zatim unesite vreme početka i završetka dana. Uređaji se automatski pali i gasi prema zadatom vremenu.



VREME I DATUM

Ekrani nameštanja sata, minuta, dana, meseca i godine. Ova podešavanja se koriste za funkcionisanje, beleženje alarma i stanja.

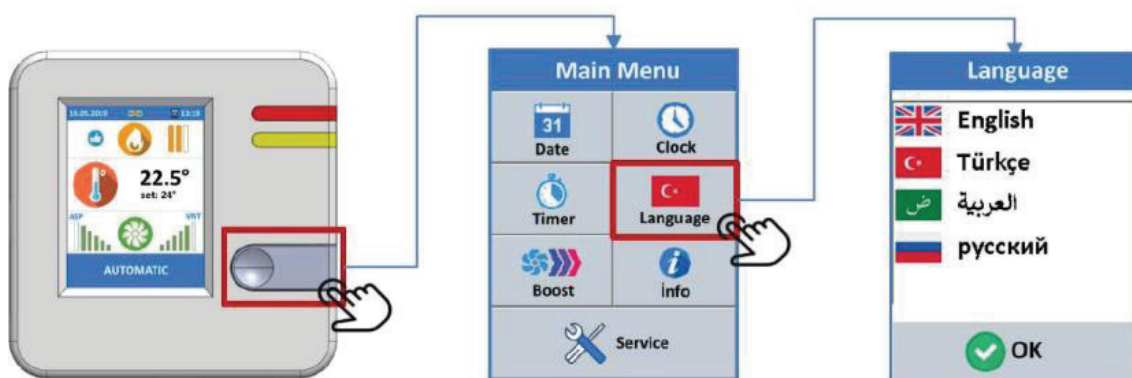


- 1- On the Main Screen, Press Function Button.
- 2- Press Date or Clock icon on the Main Menu screen.
- 3- Select value.
- 4- Set value with (+) or (-) button press.
- 5- Press OK button for save or Press Function Button without save and return to Main Menu.



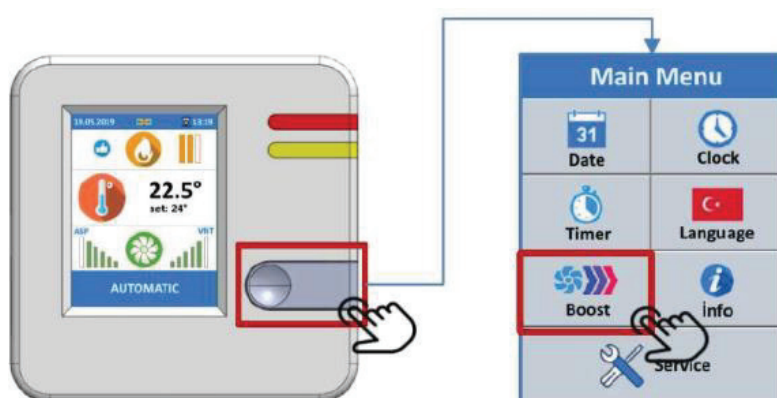


Ovde možete odabrati odgovarajući jezik. Podržani su turski, engleski, ruski i arapski jezik. Na glavnom ekranu snažno pritisnite dugme > ikonicu zastave > zatim izaberite jezik. Pritisnite OK za čuvanje ili pritisnite dugme za opciju bez čuvanja i vratite se na glavni ekran.



POJAČANJE SNAGE

Ova opcija se koristi kada dođe do naglih promena vazduha. U ovom režimu, ventilator će privremeno povećati snagu na maksimum, a zatim se vratiti na normalni nivo.

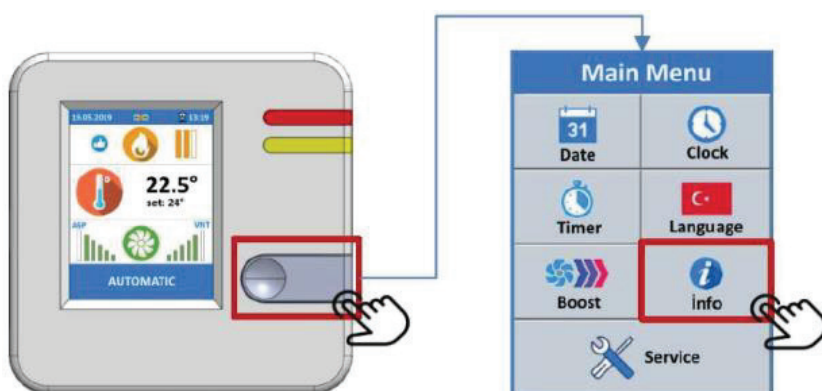


- 1- On the Main Screen, Press Function Button.
- 2- Press Boost icon on the Main Menu screen.
- 3- Activation by buzzer beep.





Ekran sadrži sve informacije o podešavanjima konfiguracije uređaja i ulaznom / Izlaznom otvoru. Omogućava vam da pratite uređaja, dodatne funkcije i radne uslove.



- 1- On the Main Screen, Press Function Button.
- 2- Press Info icon on the Main Menu screen.

MODBUS

ADDRESS (dec mal)	PARAMETER GROUP NAME	PARAMETER SUB GRUP NAME	PARAMETER NAME	R/W	LENGTH (Word/16B t)	SIGN TYPE	MULTIPLIER	DEFAULT VALUES	MIN	MAX	DESCRIPTION
0	Device	Hardwer info	ID	R	2	Unsigned	-				
2			Model	R	2	Unsigned	-				
4			Firware Version	R	2	Unsigned	-				
6		App info	Serial Number	R	6	Unsigned	-				
12			ID	R	2	Unsigned	-				
14			Firmware	R	2	Unsigned	-				
16		Note	R	8	Unsigned	-					
50	Modbus Port	Address	R/W	1	Unsigned	-	1	0	255		
51		Bound Rate	R/W	1	Unsigned	-	2	0	3	0 = 2.400bps 1 = 4.800bps 2 = 9.600bps 3 = 19.200bps	
52		Party Bit	R/W	1	Unsigned	-	0	0	2	0 = NO 1 = EVEN 2 = ODD	
53		Register Table Version	R	1	Unsigned	-	29	-	-		
60	Time	Clock	Second	R/W	1	Unsigned	-	-	0	59	
61			Minute	R/W	1	Unsigned	-	-	0	59	
62			Hour	R/W	1	Unsigned	-	-	0	23	
63		Date	Day of month	R/W	1	Unsigned	-	-	0	31	
64			Month	R/W	1	Unsigned	-	-	0	12	
65		Year	R/W	1	Unsigned	-	-	0	99		
100	Runtime Values	Working State	R	1	Unsigned	-	-	0	4	0 = OFF 1 = ON 2 = IDLE 3 = FIRE 4 = CONFIG	
101		Working Mode	R	1	Unsigned	-	-	0	4	0 = MANUEL 1 = VENTILATION 2 = HEATING 3 = COOLING 4 = AUTO	
102		Climate Mode	R	1	Unsigned	-	-	0	4	0 = NONE 1 = VENTILATION 2 = HEATING 3 = COOLING 4 = FREE COOLING	
103		Climate Mode	R	1	Unsigned	-	-	0	3		
104	ASP Fan Leve	R	1	Unsigned	-	-	0	6			
105	VNT Fan Level	R	1	Unsigned	-	-	0	6			
106	Filter Life Time Counter	R	1	Unsigned	-	-					
107	Active Alarm Count	R	1	Unsigned	-	-					
108	Alarm State Bits	R	1	Unsigned	-	-					
150	Manuel	Boost	W	1	Unsigned						
151		Reset Alarm	W	1	Unsigned						
152		Reset Filter Life Time Counter	W	1	Unsigned	-	0	0	1	0 = OFF 1 = ON	



MODBUS

500	Setting User	Unit	Working State	R/W	1	Unsigned	-	0	0	4	0 = MANUEL 1 = VENTILATION 2 = HEATING 3 = COOLING 4 = AUTO
501			Working Mode	R/W	1	Unsigned	0.1	220	100	500	
502			Set Temp	R/W	1	Unsigned	-	1	1	3	1 = VENTILATION 2 = HEATING 3 = COOLING
503			Manuel Climate Mode	R/W	1	Unsigned	-	0	0	3	
505			Manuel ASP Fan Level	R/W	1	Unsigned	-	0	0	6	
506			Manuel VNT Fan Level	R/W	1	Unsigned	-	0	0	6	
507	Setting Service	Timer	Mode	R/W	1	Unsigned	-	0	0	3	0 = OFF 1 = WEEK DAY 2 = WEEK DAY AND SATURDAY 3 = ALL WEEK
508			Start Clock Minute	R/W	1	Unsigned	-	0	0	59	
509			Start Clock Hour	R/W	1	Unsigned	-	0	0	23	
510			Stop Clock Minute	R/W	1	Unsigned	-	0	0	59	
511			Stop Clock Hour	R/W	1	Unsigned	-	0	0	23	
550	Setting Service	Fan Limit	ASP Min Fan Limit	R/W	1	Unsigned	-	0	0	100	
551			ASP Max Fan Limit	R/W	1	Unsigned	-	100	0	100	
552			VNT Min Fan Limit	R/W	1	Unsigned	-	0	0	100	
553			VNT Max Fan Limit	R/W	1	Unsigned	-	100	0	100	
554	Setting Service	Filter	State	R/W	1	Unsigned	-	0	0	1	0 = DISABLE 1 = ENABLE
555			Life Time	R/W	1	Unsigned	-	3000	240	15000	
556	Setting Service	Sensor Hum	State	R/W	1	Unsigned	-	0	0	1	0 = DISABLE 1 = ENABLE
557			Scale Min Voltage	R/W	1	Unsigned	0.1	0	0	1000	
558			Scale Max Voltage	R/W	1	Unsigned	0.1	1000	0	1000	
559			Scale Min Value	R/W	1	Unsigned	0.1	0	0	1000	
560			Scale Max Value	R/W	1	Unsigned	0.1	1000	0	1000	
561			Set Point	R/W	1	Unsigned	0.1	0	0	1000	
562	Setting Service	Sensor CO2	State	R/W	1	Unsigned	-	1000	0	1	0 = DISABLE 1 = ENABLE
563			Scale Min Voltage	R/W	1	Unsigned	0.1	600	0	1000	
564			Scale Max Voltage	R/W	1	Unsigned	0.1	0	0	1000	
565			Scale Min Value	R/W	1	Unsigned	-	0	0	1000	
566			Scale Max Value	R/W	1	Unsigned	-	1000	0	1000	
567			Set Point	R/W	1	Unsigned	-	0	0	1000	
568	Setting Service	Sensor AQ	State	R/W	1	Unsigned	-	1000	0	1	0 = DISABLE 1 = ENABLE
569			Scale Min Voltage	R/W	1	Unsigned	0.1	400	0	1000	
570			Scale Max Voltage	R/W	1	Unsigned	0.1	0	0	1000	
571			Scale Min Value	R/W	1	Unsigned	-	0	0	100	
572			Scale Max Value	R/W	1	Unsigned	-	100	0	100	
573			Set Point	R/W	1	Unsigned	-	35	0	100	
574	Setting Service	Panel Authorization	Working State Change	R/W	1	Unsigned	-	0	0	1	0 = DISABLE 1 = ENABLE
575			Working Mode Change	R/W	1	Unsigned	-	0	0	1	0 = DISABLE 1 = ENABLE
576			Temp Change	R/W	1	Unsigned	-	0	0	1	0 = DISABLE 1 = ENABLE
577			Mauel Change	R/W	1	Unsigned	-	0	0	1	0 = DISABLE 1 = ENABLE
578			Timer Change	R/W	1	Unsigned	-	0	0	1	0 = DISABLE 1 = ENABLE
579			Time Change	R/W	1	Unsigned	-	0	0	1	0 = DISABLE 1 = ENABLE



MODBUS

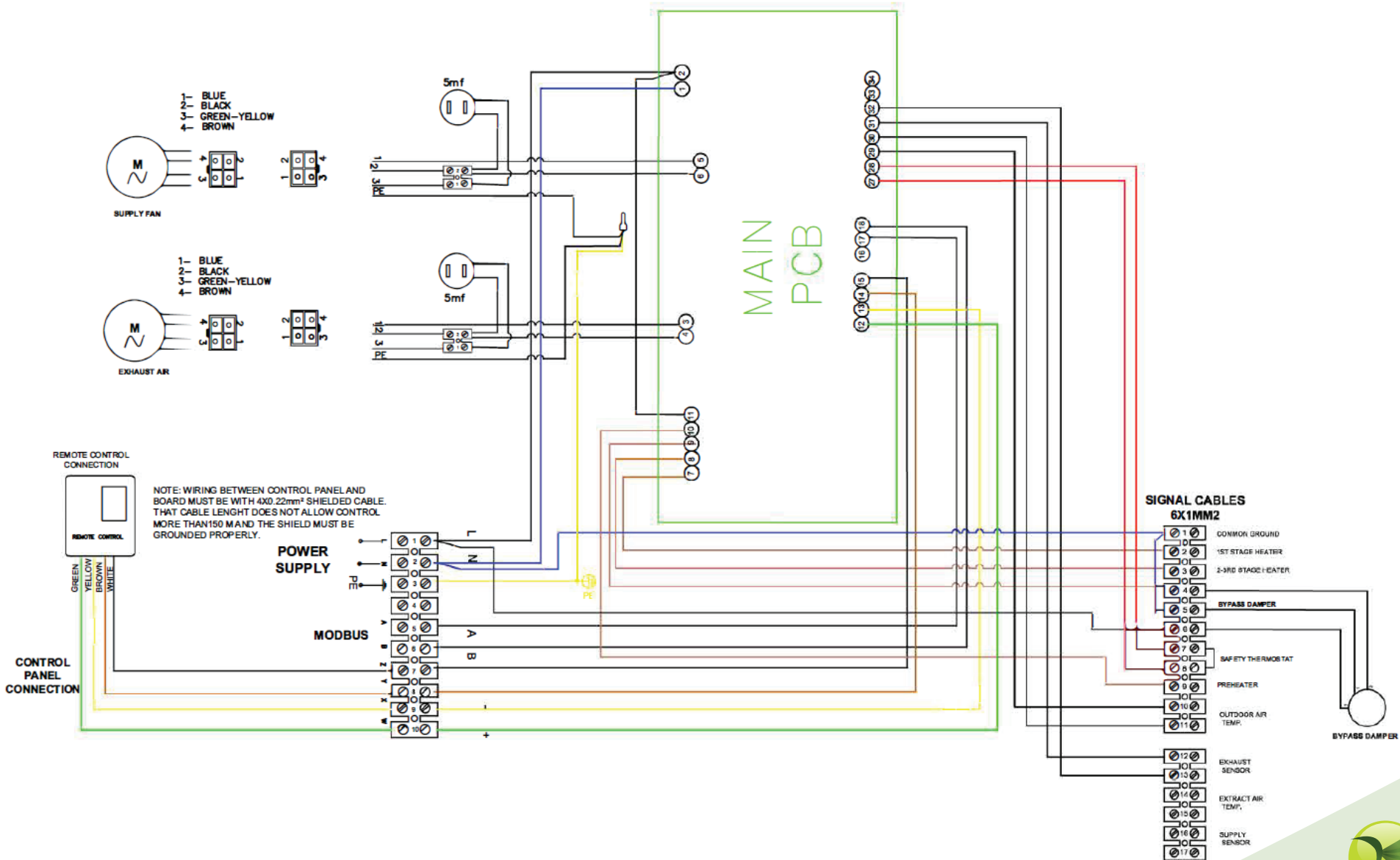
Address	Register Name	Sub-Register Name	Unit	R/W	Bit	Format	Min	Max	Scale	Notes	
600		HRV Model TY		R/W	1	Unsigned	-	0	0	1	0 = STANDART HEATER 1 = ELECTRIC HEATER 2 = WATER BATTERY 3 = HEAT PUMP 4 = DX MASTER 5 = DX SLAVE
601		Fan Type		R	1	Unsigned	-	0	0	4	0 = RADIAL 1 = EC 2 = PLUG 3 = BELT PULLEY 4 = 3LEVEL
602	After Heater	Output Type		R	1	Unsigned	-	0	0	1	0 = LEVEL 1 = BINARY
603	Pre Heater	State		R	1	Unsigned	-	0	0	1	0 = DISABLE 1 = ENABLE
604		Temp		R	1	Unsigned	0.1	0	-300	300	
605	Setting Configuration	Exchange Frost		R	1	Unsigned	-	0	0	1	0 = DISABLE 1 = ENABLE
606			Temp	R	1	Unsigned	0.1	0	-300	300	
607	Universal Input Port	UI1 Input Type		R	1	Unsigned	-	0	0	27	
608		UI2 Input Type		R	1	Unsigned	-	0	0	27	
609		UI3 Input Type		R	1	Unsigned	-	0	0	27	
610		UI4 Input Type		R	1	Unsigned	-	0	0	27	
611	Output Port Type	Out1 Type		R	1	Unsigned	-	0	0	19	
612		Out2 Type		R	1	Unsigned	-	0	0	19	
613		Out3 Type		R	1	Unsigned	-	0	0	19	
614		Out4 Type		R	1	Unsigned	-	0	0	19	
615		Out5 Type		R	1	Unsigned	-	0	0	19	
616		Out6 Type		R	1	Unsigned	-	0	0	19	
617		AOut1 Type		R	1	Unsigned	-	0	0	19	
618		AOut2 Type		R	1	Unsigned	-	0	0	19	
619	AOut3 Type		R	1	Unsigned	-	0	0	19		
620	AOut4 Type		R	1	Unsigned	-	0	0	19		
1000	View Sensor	Control Temp		R	1	Unsigned	0.1	-	-200	800	
1001		Panel Temp		R	1	Unsigned	0.1	-	-200	800	
1002		Fresh Air Temp		R	1	Unsigned	0.1	-	-200	800	
1003		Air Duct Temp		R	1	Unsigned	0.1	-	-200	800	
1004		Hum		R	1	Unsigned	0.1	-	0	1000	
1005		CO2		R	1	Unsigned	0.1	-	0	10000	
1006		Air Quality		R	1	Unsigned	0.1	-	0	1000	
1007	Air Flow		R	1	Unsigned	0.1	-	0	1000		





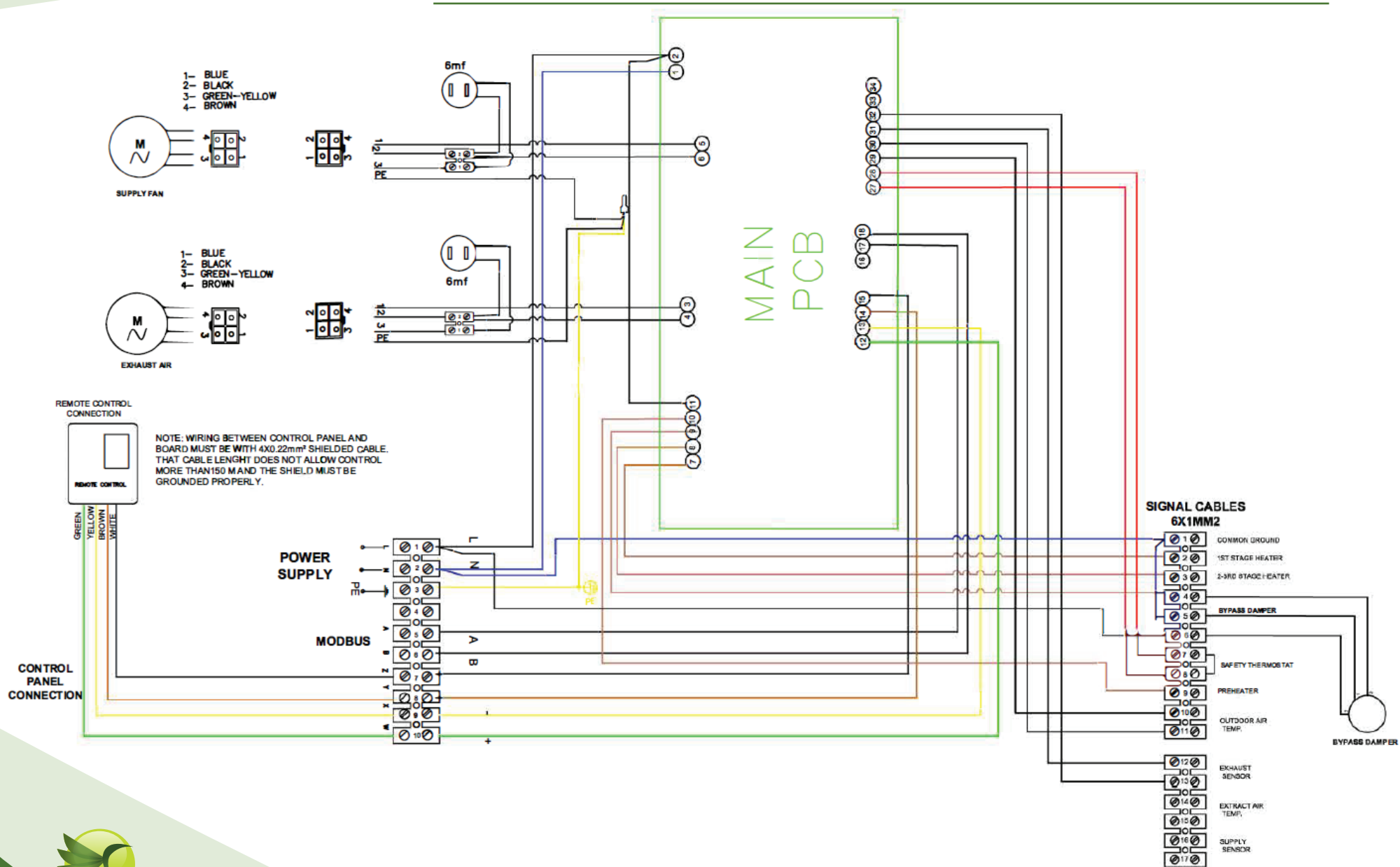
1050	View IO	Digital Out	OUT 1	R	1	Unsigned	-	-	0	1
1051			OUT 2	R	1	Unsigned	-	-	0	1
1052			OUT 3	R	1	Unsigned	-	-	0	1
1053			OUT 4	R	1	Unsigned	-	-	0	1
1054			OUT 5	R	1	Unsigned	-	-	0	1
1055			OUT 6	R	1	Unsigned	-	-	0	1
1056		Analog Out	AO1	R	1	Unsigned	-	-	0	255
1057			AO2	R	1	Unsigned	-	-	0	255
1058			AO3	R	1	Unsigned	-	-	0	255
1059			AO4	R	1	Unsigned	-	-	0	255
1060		Universal Input ADC Value	UI1 ADC	R	1	Unsigned	-	-	0	4096
1061			UI2 ADC	R	1	Unsigned	-	-	0	4096
1062			UI3 ADC	R	1	Unsigned	-	-	0	4096
1063			UI4 ADC	R	1	Unsigned	-	-	0	4096
1064		Universal Input Voltage Value	UI1 Voltaj	R	1	Unsigned	0.1	-	0	100
1065			UI2 Voltaj	R	1	Unsigned	0.1	-	0	100
1066			UI3 Voltaj	R	1	Unsigned	0.1	-	0	100
1067			UI4 Voltaj	R	1	Unsigned	0.1	-	0	100
1068		Universal Input Digital State	UI1 State	R	1	Unsigned	-	-	0	1
1069			UI2 State	R	1	Unsigned	-	-	0	1
1070	UI3 State		R	1	Unsigned	-	-	0	1	
1071	UI4 State		R	1	Unsigned	-	-	0	1	
1072	Universal Input 10 K Temp Sensor Value	UI1 Temp / NTC 10k	R	1	Signed	0.1	-	-250	800	
1073		UI2 Temp / NTC 10k	R	1	Signed	0.1	-	-250	800	
1074		UI3 Temp / NTC 10k	R	1	Signed	0.1	-	-250	800	
1075		UI4 Temp / NTC 10k	R	1	Signed	0.1	-	-250	800	

ŠEMA POVEZIVANJA JRHB73 1000

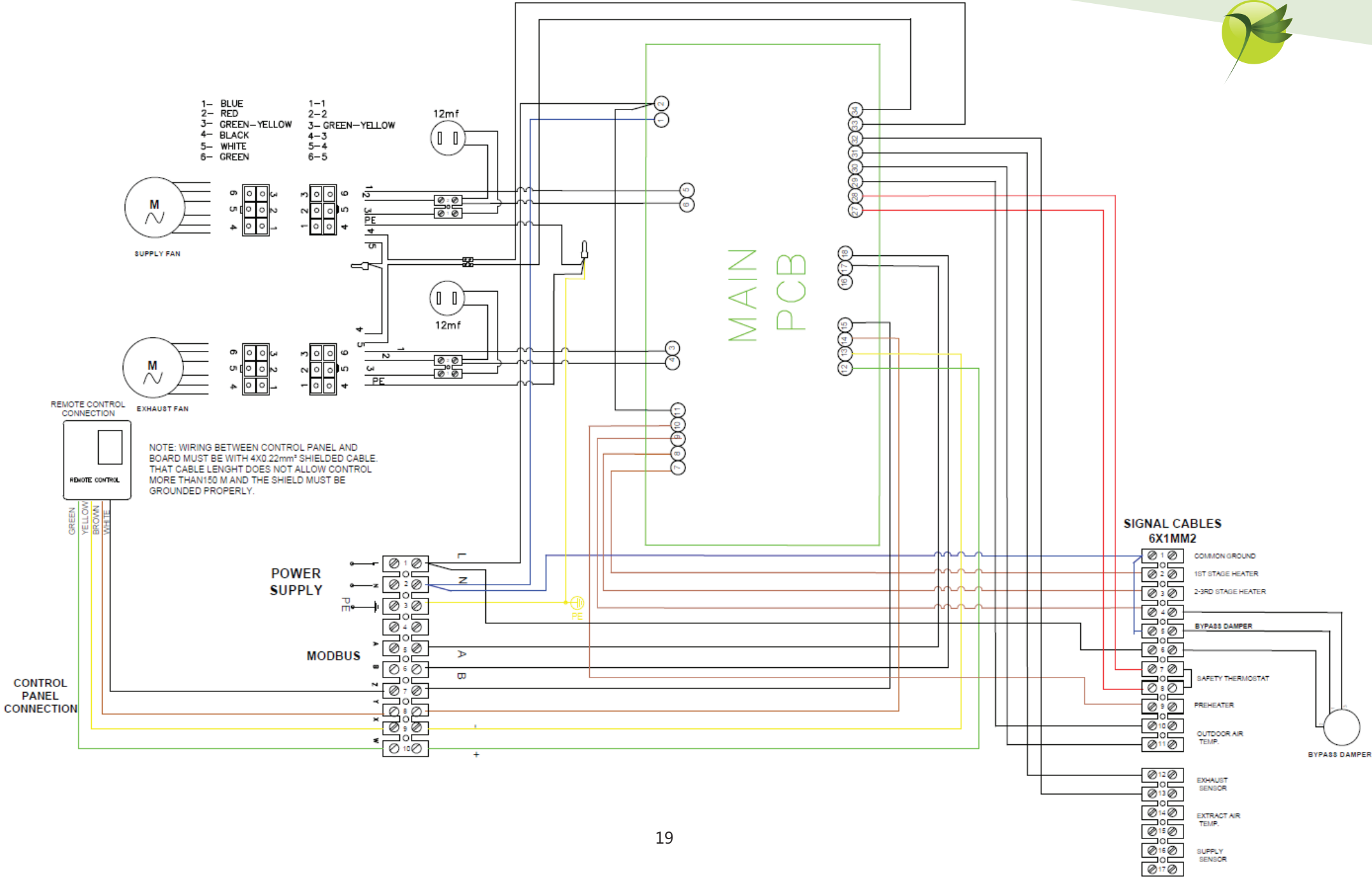


Control kit

ŠEMA POVEZIVANJA JRHB73 2000

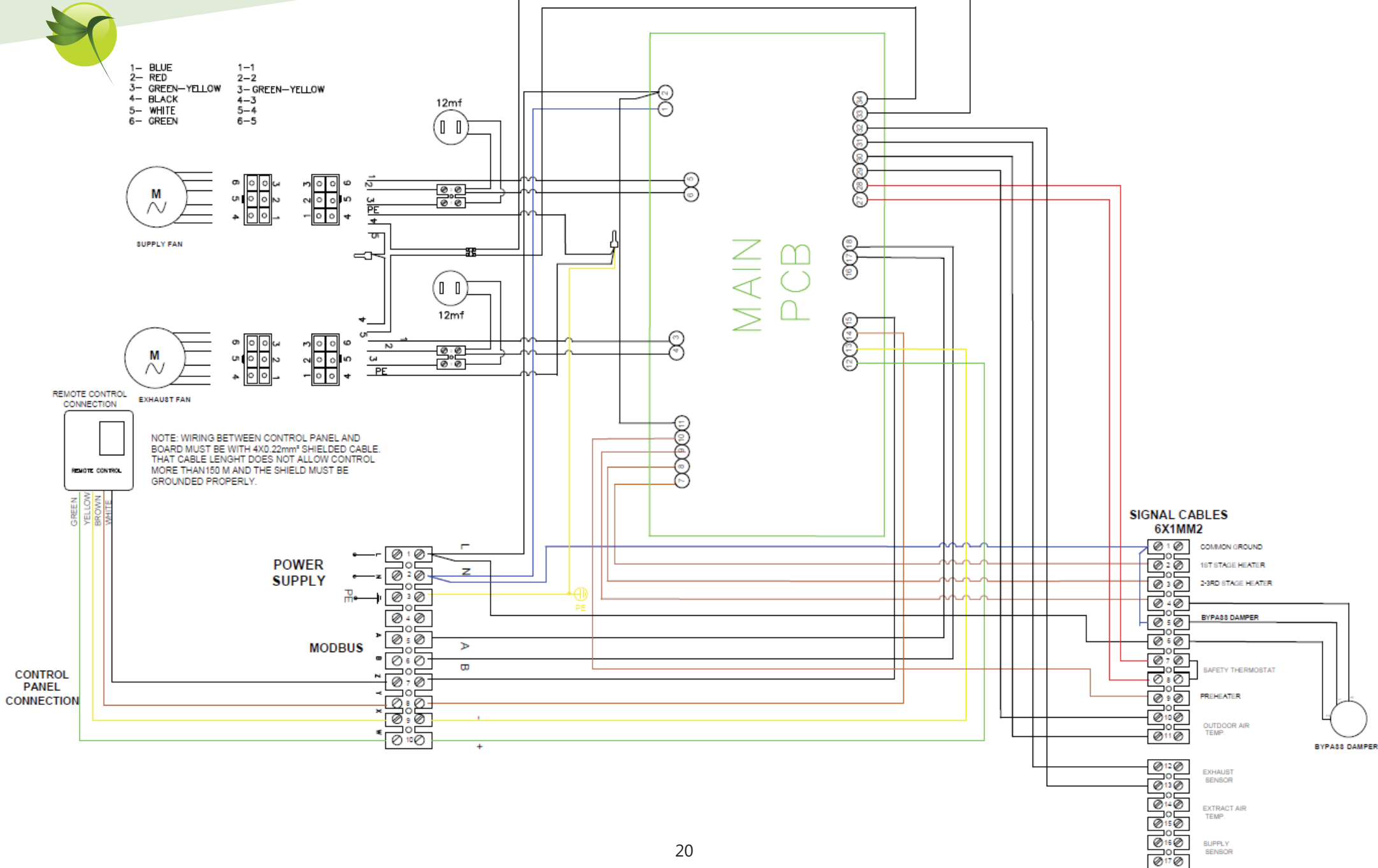


ŠEMA POVEZIVANJA JRHB73 3000

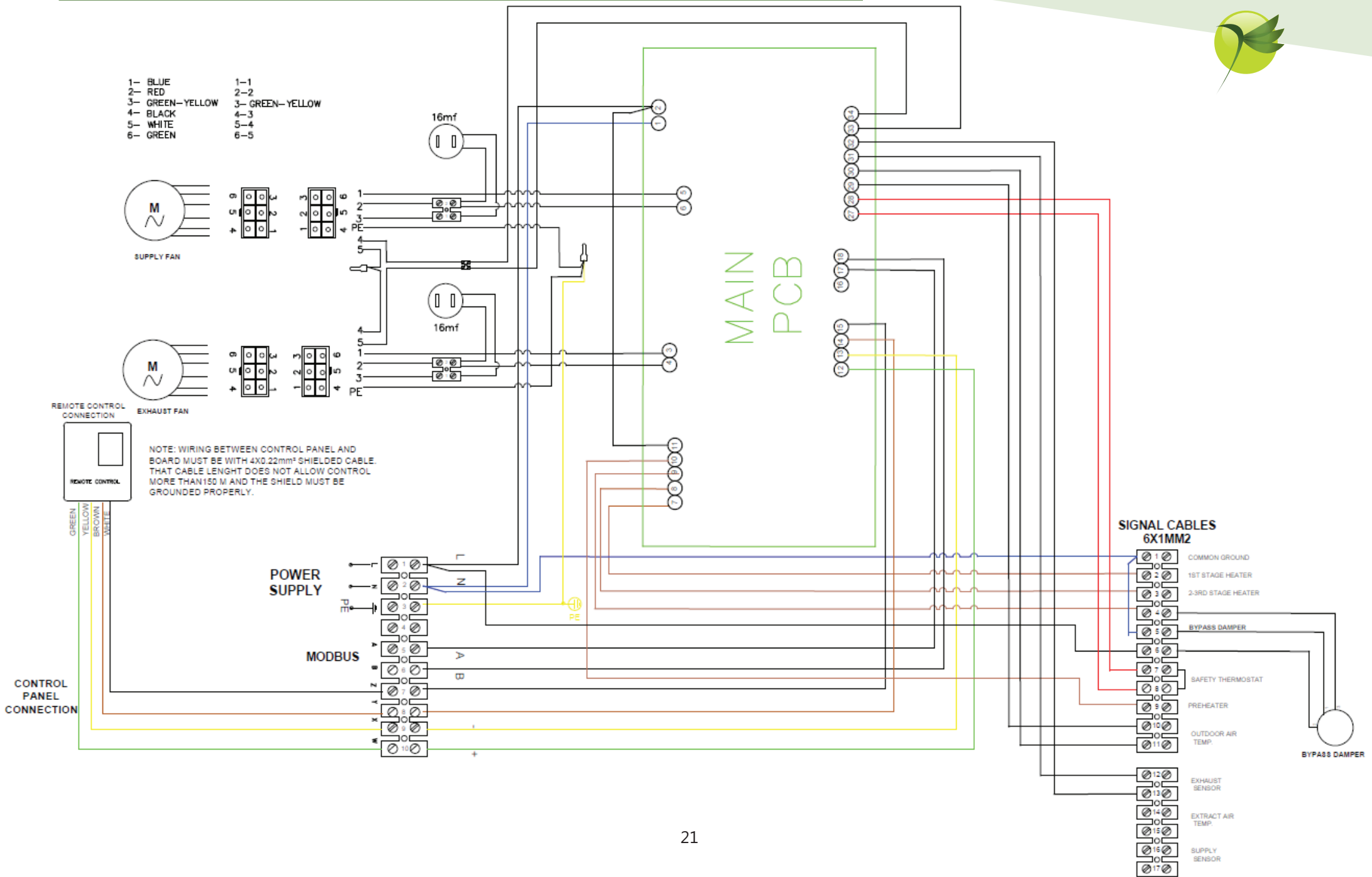


Control kit

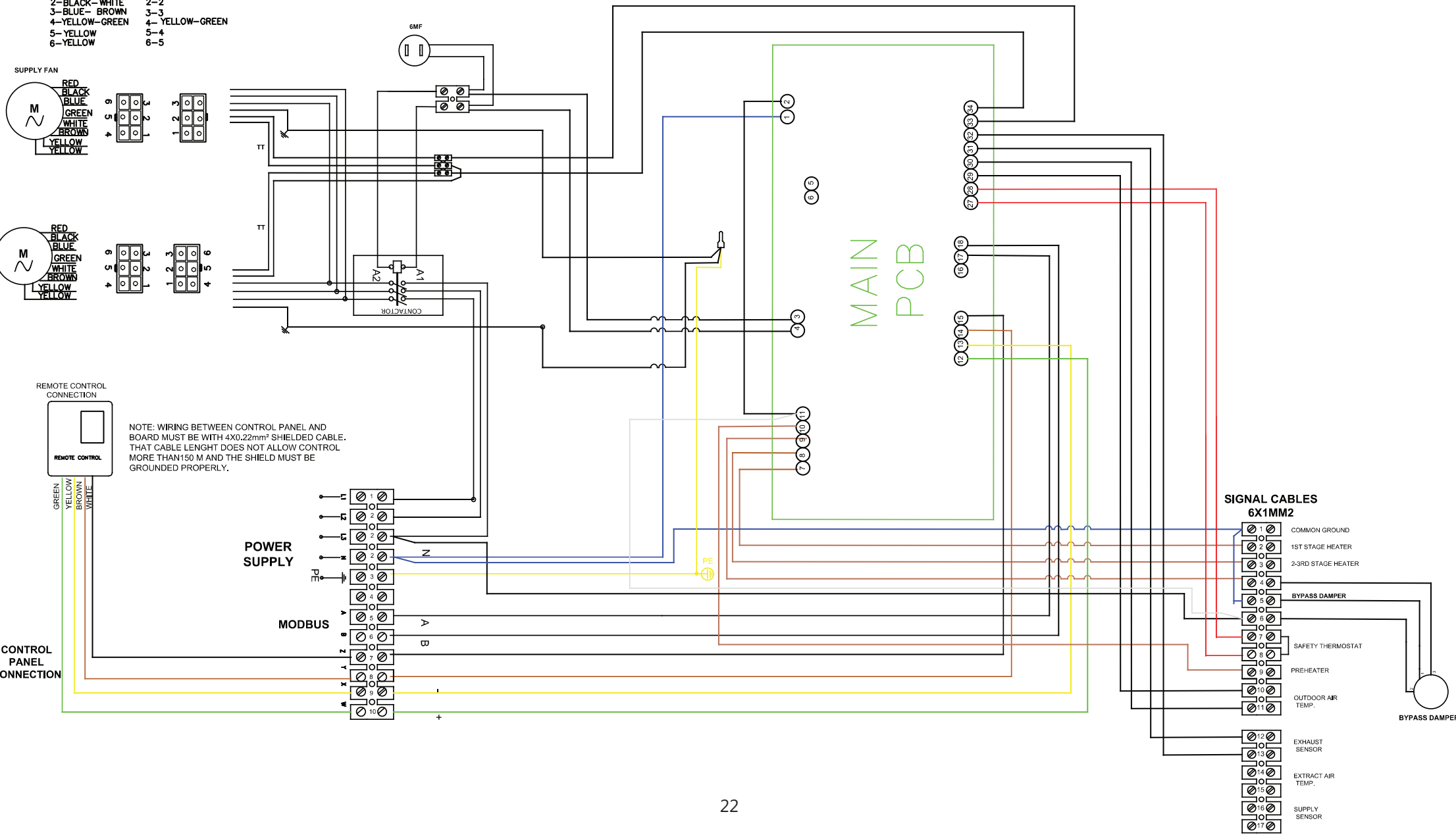
ŠEMA POVEZIVANJA JRHB73 4000



ŠEMA POVEZIVANJA JRHB73 5000



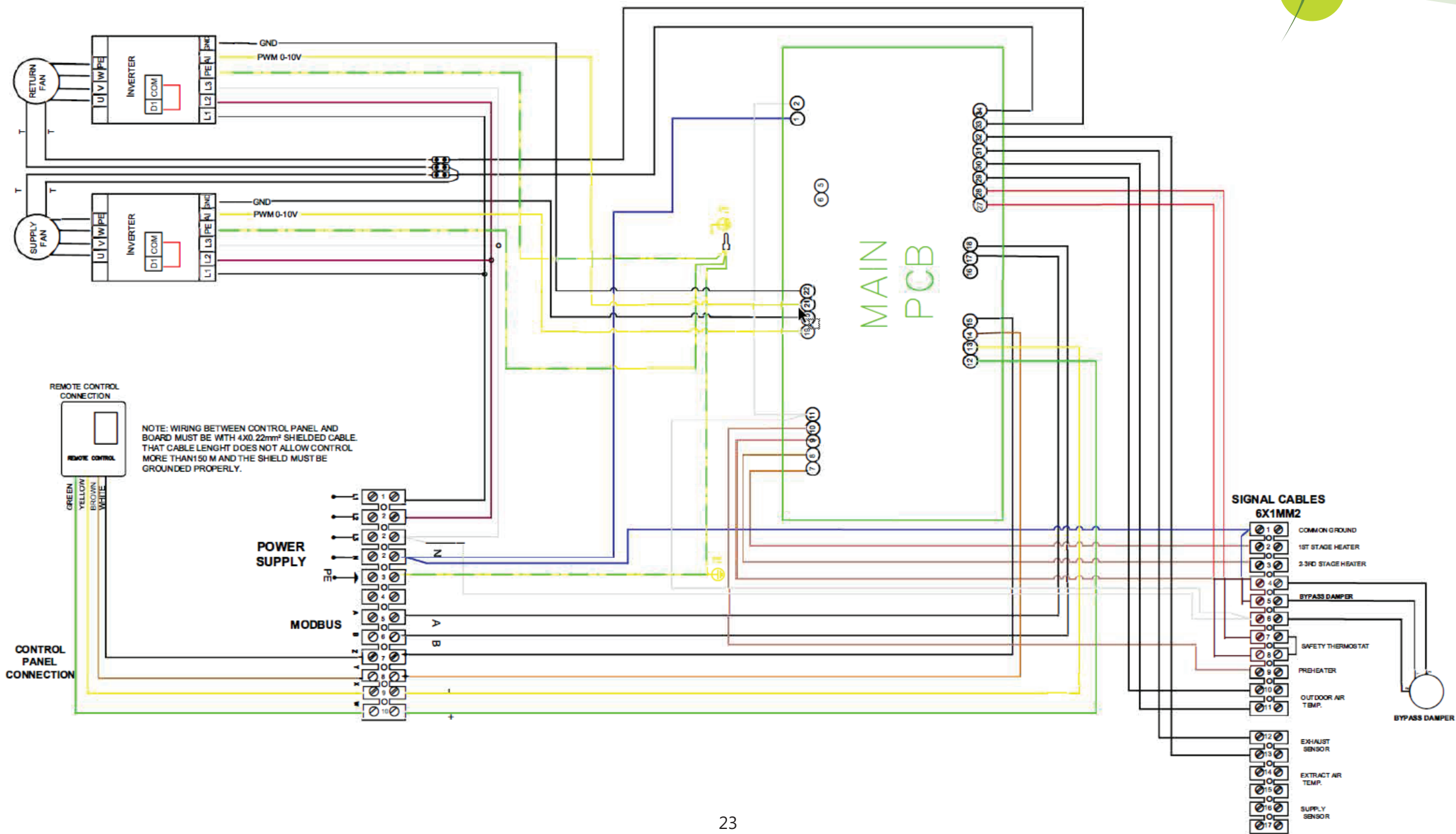
- | | |
|-----------------|-----------------|
| 1- RED-GREEN | 1-1 |
| 2- BLACK-WHITE | 2-2 |
| 3- BLUE- BROWN | 3-3 |
| 4- YELLOW-GREEN | 4- YELLOW-GREEN |
| 5- YELLOW | 5-4 |
| 6- YELLOW | 6-5 |



NOTE: WIRING BETWEEN CONTROL PANEL AND BOARD MUST BE WITH 4X0.22mm² SHIELDED CABLE. THAT CABLE LENGTH DOES NOT ALLOW CONTROL MORE THAN 150 M AND THE SHIELD MUST BE GROUNDED PROPERLY.



ŠEMA POVEZIVANJA JRHB73 6000 FREVENTNI REGULATOR





PODEŠAVANJE - PARAMETRI

KOD	NAZIV	JEZIK	TEKST	OPIS	REŠENJE
1	ALERT_SOURCE_ALARM_SYSTEM_RTC	EN	Time (RTC)	Vreme se ne može očitati	Zamenite bateriju
2	ALERT_SOURCE_ALARM_SYSTEM_COM_PANEL	EN	Communication Panel	Neuspešna komunikacija sa kontrolerom	Proverite povezivanje kablova
3	ALERT_SOURCE_ALARM_SYSTEM_COM_BMS	EN	Communication BMS	Neuspešna BMS komunikacija	Proverite konekciju i kablove
4	ALERT_SOURCE_ALARM_FIRE	EN	Fire	Signal sa požarnog senzora	Ukoliko nema požara, proveriti senzor i povezivanje
5	ALERT_SOURCE_ALARM_AIR_FLOW	EN	No Air Flow	Nije detektovan protok vazduha	Proverite protok vazduha
6	ALERT_SOURCE_ALARM_FAN_ERROR	EN	Fan Error	Pregrevanje ventilatora - greška	Proverite ventilator
7	ALERT_SOURCE_ALARM_FAN_ASP_ERROR	EN	ASP Fan Error	Pregrevanje isisnog ventilatora - greška	Proverite isisni ventilator
8	ALERT_SOURCE_ALARM_FAN_VNT_ERROR	EN	VNT Fan Error	Pregrevanje dovodnog ventilatora - greška	Proverite dovodni ventilator
9	ALERT_SOURCE_ALARM_FAN_ERROR_OFF	EN	Fan Error / Off	Pregrevanje ventilatora - onesposobljen izlaz ventilatora	Proverite ventilator
10	ALERT_SOURCE_ALARM_FAN_ASP_ERROR_OFF	EN	ASP Fan Error / Off	Pregrevanje isisnog ventilatora (onesposobljen izlaz ventilatora)	Proverite isisni ventilator
11	ALERT_SOURCE_ALARM_FAN_VNT_ERROR_OFF	EN	VNT Fan Error / Off	Pregrevanje dovodnog ventilatora (onesposobljen izlaz ventilatora)	Proverite dovodni ventilator
15	ALERT_SOURCE_ALARM_AFTER_HEATER_TERMIC_ERROR	EN	After Heater Termic Error	Greška sigurnosnog termostata električnog grejača.	Proverite postavku i položaj električnog termostata za sigurnost grejača
16	ALERT_SOURCE_ALARM_AFTER_HEATER_LIMIT_ERROR	EN	After Heater Limit Error	Limit sigurnosnog termostata grejača - greška	Proverite postavku i položaj električnog termostata sa ograničenjem grejača
17	ALERT_SOURCE_ALARM_PRE_HEATER_ERROR	EN	Pre Heater Error	Sigurnosni termostat električnog grejača - greška	Proverite postavku i položaj električnog sigurnosnog termostata grejača
18	ALERT_SOURCE_ALARM_FILTER_TIME_OUT	EN	Filter Time	Upozorenje za proveru zaprljanosti filter	Proverite servisni meni za podešavanje vremena i izvršite reset
19	ALERT_SOURCE_ALARM_FILTER_DIRTY	EN	Dirty Filter	Upozorenje za zamenu zaprljanih filtera	Proveriti senzore pritiska i povezanost senzora
20	ALERT_SOURCE_ALARM_EXCHANGER_FROST	EN	Exchanger Frost	Zamrzavanje izmenjivača toplote	Proces zaštite od smrzavanja izmenjivača toplote je aktivan
21	ALERT_SOURCE_ALARM_WBATTERY_FROST	EN	Water Battery Frost	Zamrzavanje toplovodnog izmenjivača	Proces zaštite od smrzavanja toplovodnog izmenjivača je aktivan
22	ALERT_SOURCE_ALARM_WBATTERY_FROST_OFF	EN	Water Battery Frost / Fan Off	Zaštita od zamrzavanja toplovodnog izmenjivača / Isključen ventilator	Proces zaštite od smrzavanja toplovodnog izmenjivača je aktivna / Ventilatori su isključeni
23	ALERT_SOURCE_ALARM_DX_DEFROST	EN	DX Defrost	Odmrzavanje spoljašnje jedinice VRF	Odmrzavanje spoljne VRF jedinice dok je uređaj isključena.
24	ALERT_SOURCE_ALARM_SENSOR_CONTROL_TEMP	EN	No Control Temperature	Konekcija kontrolnog senzora - greška	Proverite konekciju kontrolnog senzora
25	ALERT_SOURCE_ALARM_SENSOR_PANEL_TEMP	EN	Room Temperature Sensor	Konekcija senzora sobne temperature - greška	Proverite konekciju senzora sobne temperature
26	ALERT_SOURCE_ALARM_SENSOR_FRESH_AIR_TEMP	EN	Fresh Air Temperature Sensor	Konekcija senzora svežeg vazduha - greška	Proverite konekciju senzora svežeg vazduha
27	ALERT_SOURCE_ALARM_SENSOR_AIR_DUCT_TEMP	EN	Duct Temperature Sensor	Konekcija senzora temperature u kanalu - greška	Proverite konekciju senzora temperature u kanalu
28	ALERT_SOURCE_ALARM_SENSOR_HUM	EN	Humidity Sensor	Konekcija senzora vlažnosti - greška	Proverite konekciju senzora vlažnosti
29	ALERT_SOURCE_ALARM_SENSOR_CO2	EN	CO2 Sensor	Konekcija CO2 senzora - greška	Proverite konekciju CO2 senzora
30	ALERT_SOURCE_ALARM_SENSOR_AQ	EN	Air Quality Sensor	Konekcija senzora kvaliteta vazduha - greška	Proverite konekciju senzora kvaliteta vazduha
31	ALERT_SOURCE_WARNING_DEVICE_SWITCH_ON	EN	Device Turn ON	Uređaj je isključen	
32	ALERT_SOURCE_WARNING_DEVICE_SWITCH_OFF	EN	Device Turn OD	Uređaj je uključen	
33	ALERT_SOURCE_WARNING_DEVICE_SWITCH_IDLE	EN	Device Wait Start	Uređaj se pali	
34	ALERT_SOURCE_WARNING_EXCHANGER_FROST	EN	Exchanger Frost Protection	Upozorenje o zaštiti od smrzavanja izmenjivača toplote (Na osnovu temperature svežeg vazduha).	
35	ALERT_SOURCE_WARNING_BOOST	EN	Boost	Jedinica radi u boost režimu	
36	ALERT_SOURCE_WARNING_TIMER_ENABLE	EN	Timer Enable	Jedinica je u pripravnosti do sledećeg aktivnog vremenskog kanala	
37	ALERT_SOURCE_WARNING_EXTERNAL_START	EN	External Start Wait	Jedinica je u pripravnosti dok se spoljni prekidač ne uključi	
38	ALERT_SOURCE_COUNT	EN			



JAK-KA[®]

www.jakkagroup.com

**Bulevar Zorana Đinđića 80,
11070 NOVI BEOGRAD**



**+381 11 2600 901
+381 11 2600 906**



jakkagroup@jakkagroup.com



www.jakkagroup.com

